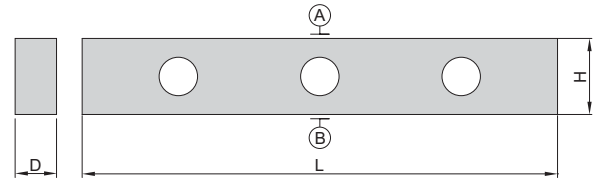


GRANITE STRAIGHT EDGES



4147-500A



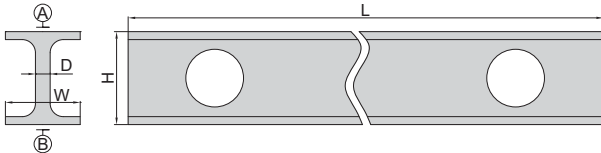
Code	Length (L)	Flatness of A and B	Parallelism between A and B	D	H
4147-500A	500mm	2.1 μ m	3.2 μ m	50mm	80mm
4147-1000A	1000mm	3.0 μ m	4.5 μ m	60mm	120mm

MAGNALIUM STRAIGHT EDGES

- Made of magnalium, light weight, non-deform, no rusty



4180-1500



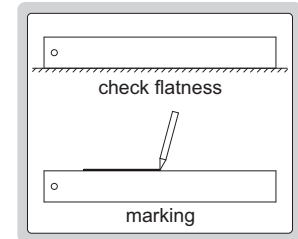
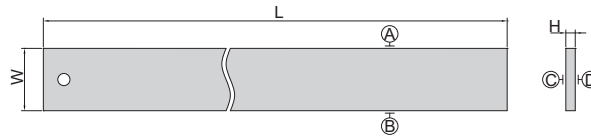
Code	Length (L)	Flatness of A and B	Parallelism between A and B	H	W	D	Weight
4180-500	500mm	3 μ m	4 μ m	60mm	30mm	5mm	0.8kg
4180-1000	1000mm	5 μ m	8 μ m	60mm	30mm	5mm	1.5kg
4180-1500	1500mm	15 μ m	22 μ m	100mm	40mm	7mm	2.3kg
4180-2000	2000mm	18 μ m	27 μ m	100mm	40mm	7mm	6kg
4180-2500	2500mm	22 μ m	33 μ m	100mm	40mm	7mm	7.5kg
4180-3000	3000mm	48 μ m	72 μ m	150mm	80mm	8mm	21kg

PRECISION STRAIGHT EDGES



7117-300

- Check flatness and for marking
- Made of tool steel



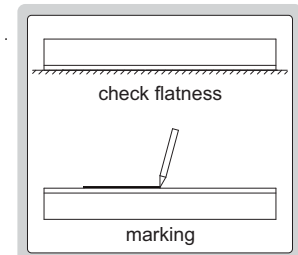
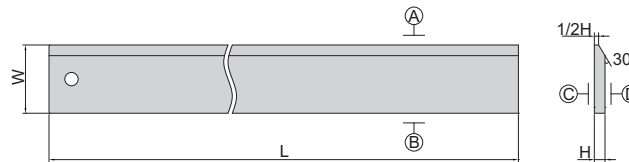
Code	Range (L)	Flatness of A and B	Flatness of C and D	W	H
7117-300	305mm	0.005mm	0.05mm	41mm	6.3mm
7117-600	610mm	0.006mm	0.06mm	51mm	7.9mm
7117-900	914mm	0.007mm	0.06mm	64mm	9.5mm

PRECISION STRAIGHT EDGES WITH BEVELED EDGE



7118-300

- Check flatness and for marking
- Made of tool steel



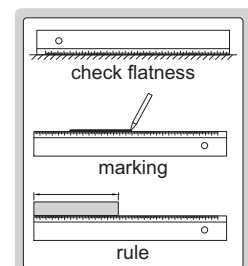
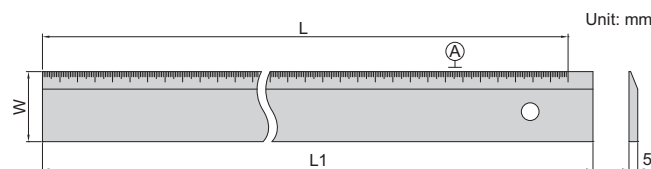
Code	Range (L)	Flatness of A and B	Flatness of C and D	W	H
7118-300	305mm	0.005mm	0.05mm	41mm	6.3mm
7118-600	610mm	0.006mm	0.06mm	51mm	7.9mm
7118-900	914mm	0.007mm	0.06mm	64mm	9.5mm

STRAIGHT EDGES



7111-300A

- Check flatness and straightness, as well as for marking
- Graduation on the beveled edge
- Made of hardened tool steel
- Chrome plated



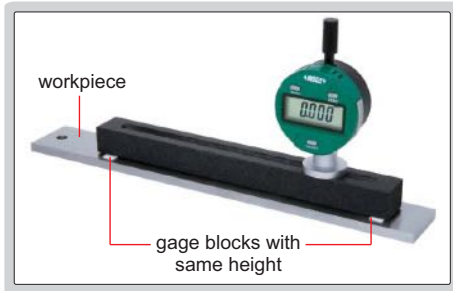
Code	Range (L)	Straightness of A	L1	W
7111-300A	300mm	0.02mm	310mm	40mm
7111-500A	500mm	0.03mm	510mm	40mm
7111-1000A	1000mm	0.04mm	1010mm	50mm

GRANITE HODLER CAN BE CUSTOMIZED
ACCORDING TO WORKPIECES

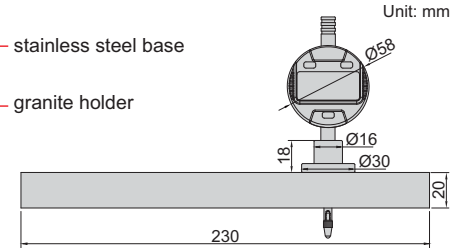
STRAIGHTNESS/FLATNESS GAGE



application



2144-200



Unit: mm

Code	Range	Digital indicator resolution	Straightness measurement accuracy	Parallelism of top and bottom surfaces of granite holder	Flatness of top and bottom surfaces of granite holder
2144-200	200mm	0.001mm/0.00005"	3 μ m	2 μ m	1.5 μ m