

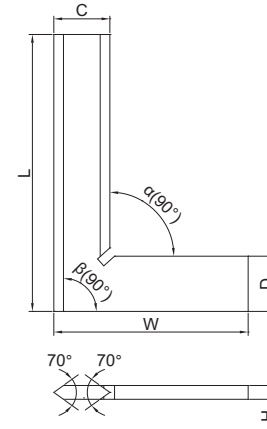
## 90° BEVELED EDGE SQUARES

10

- Satin chrome plating
- Beveled edges for inside and outside measurements
- Made of hardened stainless steel



4790-0100



### DIN875 grade 00 (mm)

Code	Size (LxW)	Squareness		C	D	H
		Inside ( $\alpha$ )	Outside ( $\beta$ )			
4790-050	50x40mm	2.4 $\mu$ m	2.5 $\mu$ m	13	13	4
4790-075	75x50mm	2.6 $\mu$ m	2.8 $\mu$ m	15	15	4
4790-0100	100x70mm	2.8 $\mu$ m	3.0 $\mu$ m	20	20	5
4790-0150	150x100mm	3.2 $\mu$ m	3.5 $\mu$ m	30	30	6
4790-0200	200x130mm	3.7 $\mu$ m	4.0 $\mu$ m	34	34	7
4790-0250	250x165mm	4.2 $\mu$ m	4.5 $\mu$ m	35	35	7
4790-0300	300x200mm	4.6 $\mu$ m	5.0 $\mu$ m	40	40	8

### DIN875 grade 0 (mm)

Code	Size (LxW)	Squareness		C	D	H
		Inside ( $\alpha$ )	Outside ( $\beta$ )			
4790-500	50x40mm	6 $\mu$ m	6 $\mu$ m	13	13	4
4790-750	75x50mm	6 $\mu$ m	7 $\mu$ m	15	15	4
4790-1000	100x70mm	7 $\mu$ m	7 $\mu$ m	20	20	5
4790-1500	150x100mm	7 $\mu$ m	8 $\mu$ m	30	30	6
4790-2000	200x130mm	8 $\mu$ m	9 $\mu$ m	34	34	7
4790-2500	250x165mm	9 $\mu$ m	10 $\mu$ m	35	35	7
4790-3000	300x200mm	10 $\mu$ m	11 $\mu$ m	40	40	8

## 90° TOOL MAKER SQUARES

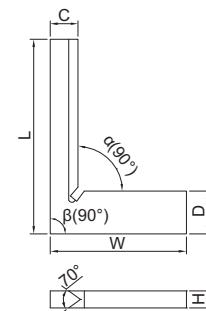
- DIN875 grade 00
- Beveled edge for inside measurement
- Made of hardened stainless steel

(mm)

Code	Size (LxW)	Squareness		C	D	H
		Inside ( $\alpha$ )	Outside ( $\beta$ )			
4794-025	25x20mm	2.2 $\mu$ m	2.3 $\mu$ m	4	6.5	3.5
4794-040	40x28mm	2.3 $\mu$ m	2.4 $\mu$ m	5.5	8.5	3.5



4794-040



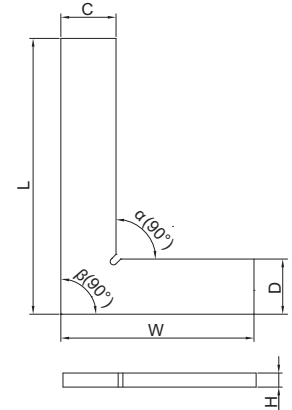
## 90° FLAT EDGE SQUARES

- DIN875 grade 0
- Made of hardened stainless steel

Code	Size (LxW)	Squareness		C	D	H	(mm)
		Inside ( $\alpha$ )	Outside ( $\beta$ )				
4791-50	50x40mm	6 $\mu$ m	6 $\mu$ m	15	15	4	
4791-75	75x50mm	6 $\mu$ m	7 $\mu$ m	15	15	4	
4791-100	100x70mm	7 $\mu$ m	7 $\mu$ m	20	20	5	
4791-150	150x100mm	7 $\mu$ m	8 $\mu$ m	30	30	6	
4791-200	200x130mm	8 $\mu$ m	9 $\mu$ m	30	30	7	
4791-250	250x165mm	9 $\mu$ m	10 $\mu$ m	35	35	7	
4791-300	300x200mm	10 $\mu$ m	11 $\mu$ m	40	40	8	



4791-100



10

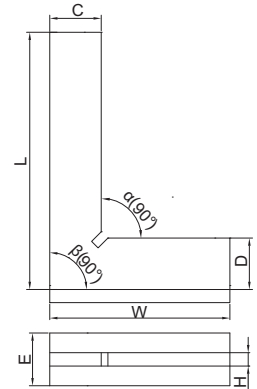
## 90° FLAT EDGE SQUARES WITH WIDE BASE

- DIN875 grade 0
- Made of hardened stainless steel

Code	Size (LxW)	Squareness		C	D	H	E	(mm)
		Inside ( $\alpha$ )	Outside ( $\beta$ )					
4793-50	50x40mm	6 $\mu$ m	6 $\mu$ m	13	13	4	13	
4793-75	75x50mm	6 $\mu$ m	7 $\mu$ m	15	15	4	15	
4793-100	100x70mm	7 $\mu$ m	7 $\mu$ m	20	20	5	20	
4793-150	150x100mm	7 $\mu$ m	8 $\mu$ m	30	30	6	30	
4793-200	200x130mm	8 $\mu$ m	9 $\mu$ m	30	30	7	30	
4793-250	250x165mm	9 $\mu$ m	10 $\mu$ m	35	35	7	35	
4793-300	300x200mm	10 $\mu$ m	11 $\mu$ m	40	40	8	40	



4793-100



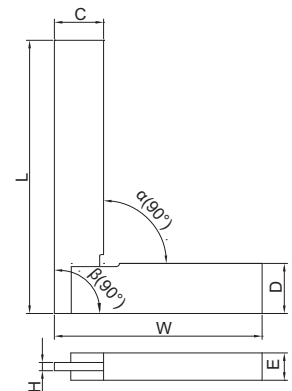
## 90° FLAT EDGE SQUARES WITH WIDE BASE

- DIN875 grade 0
- Made of hardened stainless steel

Code	Size (LxW)	Squareness		C	D	H	E	(mm)
		Inside ( $\alpha$ )	Outside ( $\beta$ )					
4792-50	50x40mm	6 $\mu$ m	6 $\mu$ m	12	12	3	10	
4792-75	75x50mm	6 $\mu$ m	7 $\mu$ m	14	14	3	10	
4792-100	100x70mm	7 $\mu$ m	7 $\mu$ m	18	18	3	10	
4792-150	150x100mm	8 $\mu$ m	8 $\mu$ m	22	22	4	12	
4792-200	200x130mm	9 $\mu$ m	9 $\mu$ m	25	25	4	12	



4792-100



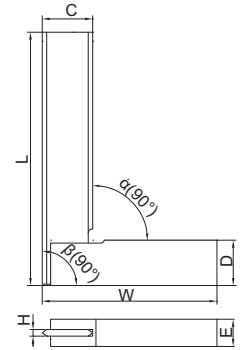
## 90° BEVELED EDGE SQUARES WITH WIDE BASE

- DIN875 grade 0
- Beveled edges for inside and outside measurements
- Made of hardened stainless steel

Code	Size (LxW)	Squareness		C	D	H	E
		Inside ( $\alpha$ )	Outside ( $\beta$ )				
4795-50	50x40mm	6 $\mu$ m	6 $\mu$ m	12	12	3	10
4795-75	75x50mm	6 $\mu$ m	7 $\mu$ m	14	14	3	10
4795-100	100x70mm	7 $\mu$ m	7 $\mu$ m	18	18	3	10
4795-150	150x100mm	8 $\mu$ m	8 $\mu$ m	22	22	4	12
4795-200	200x130mm	9 $\mu$ m	9 $\mu$ m	25	25	4	12



4795-100



ATTENTION: NO ANTI-RUST TREATMENT, NOT HARDEND

ATTENTION: LOW ACCURACY

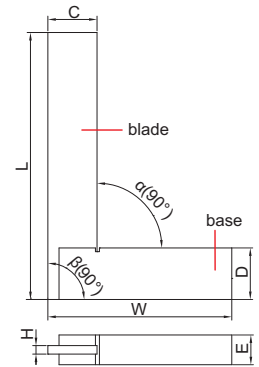
## MACHINIST SQUARES WITH WIDE BASE (ECONOMIC TYPE)

- DIN875 grade 2
- Made of carbon steel, no anti-rust treatment, not hardend

Code	Size (LxW)	Squareness		C	D	H	E
		Inside ( $\alpha$ )	Outside ( $\beta$ )				
4707-50	50x40mm	24 $\mu$ m	25 $\mu$ m	16	12	3	9
4707-75	75x50mm	26 $\mu$ m	28 $\mu$ m	16	16	3	9
4707-100	100x70mm	28 $\mu$ m	30 $\mu$ m	19	19	3	12
4707-150	150x100mm	33 $\mu$ m	35 $\mu$ m	25	25	3	16
4707-200	200x130mm	37 $\mu$ m	40 $\mu$ m	30	32	4	16
4707-250	250x165mm	42 $\mu$ m	45 $\mu$ m	30	32	4	19
4707-300	300x200mm	47 $\mu$ m	50 $\mu$ m	32	32	4	19
4707-400	400x250mm	56 $\mu$ m	60 $\mu$ m	38	38	5	22
4707-500	500x300mm	65 $\mu$ m	70 $\mu$ m	45	50	6	25
4707-600	600x350mm	75 $\mu$ m	80 $\mu$ m	50	50	6	30
4707-750	750x400mm	90 $\mu$ m	95 $\mu$ m	55	55	6	50
4707-900	900x500mm	103 $\mu$ m	110 $\mu$ m	65	75	9	50
4707-1000	1000x550mm	113 $\mu$ m	120 $\mu$ m	65	75	9	50



4707-100



ATTENTION: NO ANTI-RUST TREATMENT, NOT HARDEND

ATTENTION: LOW ACCURACY

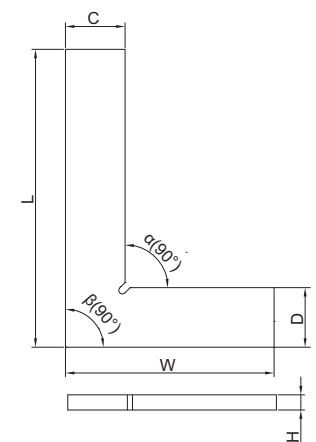
## MACHINIST SQUARES (ECONOMIC TYPE)

- DIN875 grade 2
- Made of carbon steel, no anti-rust treatment, not hardend

Code	Size (LxW)	Squareness		C	D	H
		Inside ( $\alpha$ )	Outside ( $\beta$ )			
4796-50	50x30mm	24 $\mu$ m	25 $\mu$ m	12	12	3
4796-75	75x50mm	26 $\mu$ m	28 $\mu$ m	16	16	3
4796-100	100x70mm	28 $\mu$ m	30 $\mu$ m	19	19	5
4796-125	125x80mm	30 $\mu$ m	33 $\mu$ m	22	22	5
4796-150	150x100mm	33 $\mu$ m	35 $\mu$ m	25	25	6
4796-200	200x130mm	38 $\mu$ m	40 $\mu$ m	25	25	6
4796-250	250x165mm	43 $\mu$ m	45 $\mu$ m	25	25	6
4796-300	300x200mm	47 $\mu$ m	50 $\mu$ m	30	30	6
4796-350	350x200mm	51 $\mu$ m	55 $\mu$ m	38	38	6
4796-400	400x200mm	56 $\mu$ m	60 $\mu$ m	38	38	9
4796-450	450x250mm	58 $\mu$ m	65 $\mu$ m	38	38	9
4796-500	500x300mm	69 $\mu$ m	70 $\mu$ m	38	38	9



4796-150



## MACHINIST SQUARES WITH WIDE BASE AND SCALE (ECONOMIC TYPE)

ATTENTION: NO ANTI-RUST TREATMENT, NOT HARDEND

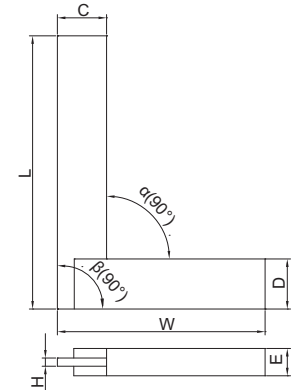
ATTENTION: LOW ACCURACY

- DIN875 grade 2
- Made of carbon steel, no anti-rust treatment, not hardend

Code	Size (LxW)	Squareness		C	D	H	E
		Inside ( $\alpha$ )	Outside ( $\beta$ )				
4711-50	50×30mm	24 $\mu$ m	25 $\mu$ m	16	12	2.5	9
4711-75	75×50mm	26 $\mu$ m	28 $\mu$ m	16	16	2.5	9
4711-100	100×70mm	28 $\mu$ m	30 $\mu$ m	19	19	3	12
4711-150	150×100mm	33 $\mu$ m	35 $\mu$ m	25	25	3	16
4711-200	200×130mm	37 $\mu$ m	40 $\mu$ m	30	32	3	16
4711-250	250×165mm	42 $\mu$ m	45 $\mu$ m	30	32	3	19
4711-300	300×200mm	47 $\mu$ m	50 $\mu$ m	32	32	3	19
4711-400	400×200mm	56 $\mu$ m	60 $\mu$ m	38	38	4.5	22
4711-500	500×300mm	65 $\mu$ m	70 $\mu$ m	44	50	6	25
4711-600	600×350mm	75 $\mu$ m	80 $\mu$ m	50	50	6	30
4711-750	750×400mm	90 $\mu$ m	95 $\mu$ m	55	55	6	50



4711-100



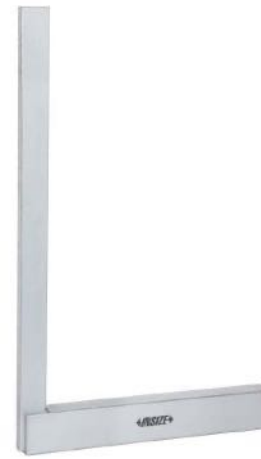
10

## MAGNALIUM 90° FLAT EDGE SQUARES WITH WIDE BASE

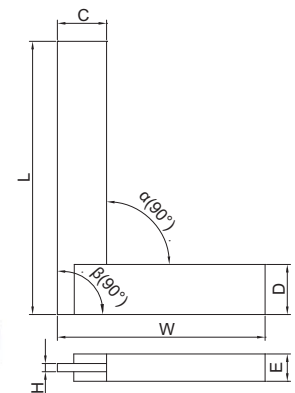
ATTENTION: LOW ACCURACY

- Made of magnalium, light weight, non-deform, no rusty

Code	Size (LxW)	Squareness		C	D	H	E	Weight
		Inside ( $\alpha$ )	Outside ( $\beta$ )					
4705-630	630×400mm	107 $\mu$ m	113 $\mu$ m	40	60	18	40	5kg
4705-800	800×500mm	123 $\mu$ m	130 $\mu$ m	50	70	25	50	7kg
4705-1000	1000×630mm	143 $\mu$ m	150 $\mu$ m	50	70	25	50	9kg
4705-1250	1250×800mm	168 $\mu$ m	175 $\mu$ m	50	70	25	50	11kg
4705-1600	1600×1000mm	203 $\mu$ m	210 $\mu$ m	50	70	25	50	13kg
4705-2000	2000×1250mm	243 $\mu$ m	250 $\mu$ m	50	70	25	50	15kg
4705-2600	2600×1500mm	303 $\mu$ m	310 $\mu$ m	50	70	25	50	20kg



4705-630



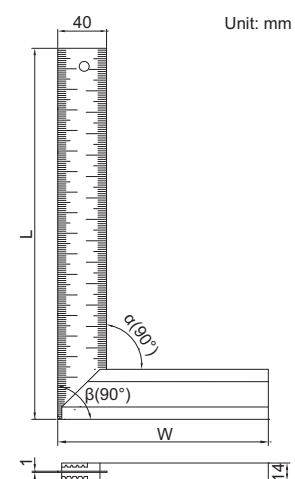
## TRY SQUARE

- Graduation: 1mm
- Stainless steel blade, aluminum base

Code	Size (LxW)	Squareness	
		Inside ( $\alpha$ )	Outside ( $\beta$ )
2275-300	300x170mm	0.5mm	0.5mm



2275-300

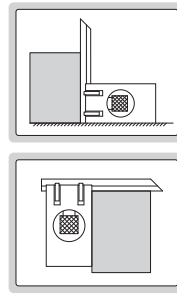


Unit: mm

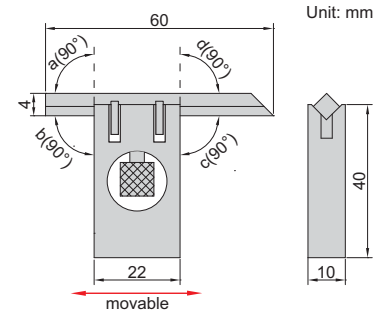
## ADJUSTABLE SQUARE

- The straight edge can move and can be locked by the clamping screw
- Made of hardened stainless steel

Code	Squareness (a, b, c, d)
4701-1	7 $\mu$ m



4701-1



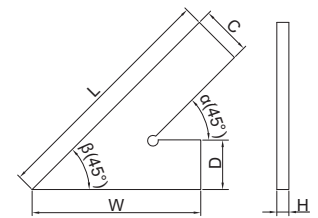
## 45° SQUARES

- Made of hardened stainless steel

Code	Size (LxW)	Accuracy		C	D	H
		Inside ( $\alpha$ )	Outside ( $\beta$ )			
4745-1120	120x80mm	29 $\mu$ m	32 $\mu$ m	20	20	5
4745-1150	150x100mm	32 $\mu$ m	35 $\mu$ m	20	20	5
4745-1200	200x130mm	36 $\mu$ m	40 $\mu$ m	25	25	5



4745-1120



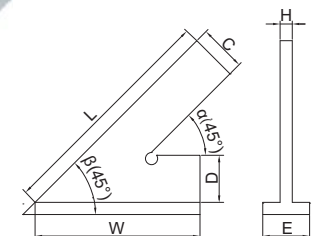
## 45° SQUARES WITH WIDE BASE

- Made of hardened stainless steel

Code	Size (LxW)	Accuracy		C	D	H	E
		Inside ( $\alpha$ )	Outside ( $\beta$ )				
4747-120	120x80mm	29 $\mu$ m	33 $\mu$ m	20	20	5	20
4747-150	150x100mm	32 $\mu$ m	36 $\mu$ m	20	20	5	20
4747-200	200x130mm	36 $\mu$ m	41 $\mu$ m	25	25	5	25



4747-120



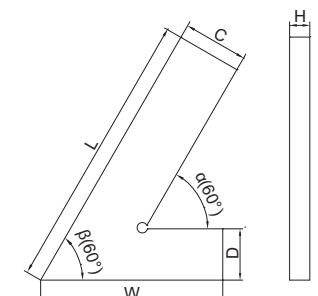
## 60° SQUARES

- Made of hardened stainless steel

Code	Size (LxW)	Accuracy		C	D	H
		Inside ( $\alpha$ )	Outside ( $\beta$ )			
4760-1120	120x80mm	30 $\mu$ m	32 $\mu$ m	20	20	5
4760-1150	150x100mm	32 $\mu$ m	35 $\mu$ m	20	20	5
4760-1200	200x130mm	37 $\mu$ m	40 $\mu$ m	25	25	5

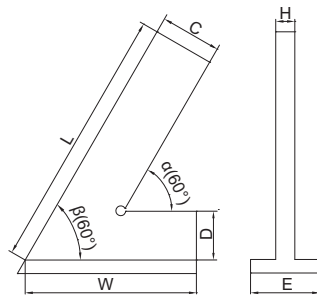


4760-1120



## 60° SQUARES WITH WIDE BASE

- Made of hardened stainless steel



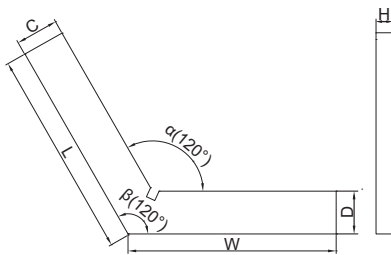
(mm)

Code	Size (LxW)	Accuracy		C	D	H	E
		Inside ( $\alpha$ )	Outside ( $\beta$ )				
4762-120	120x80mm	30 $\mu$ m	33 $\mu$ m	20	20	5	20
4762-150	150x100mm	33 $\mu$ m	36 $\mu$ m	20	20	5	20
4762-200	200x130mm	37 $\mu$ m	41 $\mu$ m	25	25	5	25



4762-120

## 10 120° SQUARES



(mm)

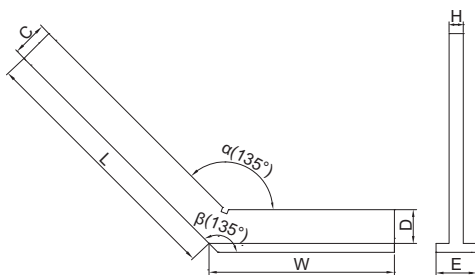
Code	Size (LxW)	Accuracy		C	D	H
		Inside ( $\alpha$ )	Outside ( $\beta$ )			
4706-150	50x50mm	24 $\mu$ m	25 $\mu$ m	15	15	5
4706-175	75x75mm	26 $\mu$ m	28 $\mu$ m	20	20	5
4706-1100	100x100mm	29 $\mu$ m	30 $\mu$ m	20	20	5
4706-1150	150x150mm	34 $\mu$ m	35 $\mu$ m	25	25	5
4706-1200	200x200mm	38 $\mu$ m	40 $\mu$ m	30	30	7



4706-1100

- Made of hardened stainless steel

## 135° SQUARES WITH WIDE BASE



(mm)

Code	Size (LxW)	Accuracy		C	D	H	E
		Inside ( $\alpha$ )	Outside ( $\beta$ )				
4754-3120	120x80mm	31 $\mu$ m	33 $\mu$ m	20	20	5	20
4754-3150	150x100mm	34 $\mu$ m	36 $\mu$ m	20	20	5	20
4754-3200	200x130mm	39 $\mu$ m	41 $\mu$ m	30	30	7	30

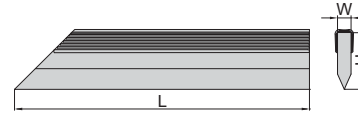


4754-3120

- Made of hardened stainless steel

Code	Size (L)	Straightness	W	H
4700-50	50mm	2.2µm	5mm	20mm
4700-75	75mm	2.3µm	5mm	25mm
4700-100	100mm	2.4µm	5mm	25mm
4700-125	125mm	2.5µm	6mm	30mm
4700-150	150mm	2.6µm	6mm	30mm
4700-200	200mm	2.8µm	6mm	30mm
4700-250	250mm	3.0µm	8mm	40mm
4700-300	300mm	3.2µm	8mm	40mm
4700-400	400mm	3.6µm	10mm	50mm
4700-500	500mm	4.0µm	10mm	50mm

## STRAIGHT EDGES

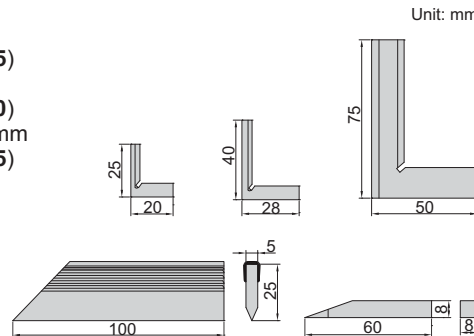


4700-100

- DIN874
- Beveled edge
- Made of hardened stainless steel
- Satin chrome plating

## SQUARE SET

- Includes:
  - 90° tool maker square 25x20mm DIN875 grade 00 (code **4794-025**)
  - 90° tool maker square 40x28mm DIN875 grade 00 (code **4794-040**)
  - 90° beveled edge square 75x50mm DIN875 grade 00 (code **4790-075**)
  - straight edge 100mm DIN874 (code **4700-100**)
  - scriber
- Made of hardened stainless steel



4702-1