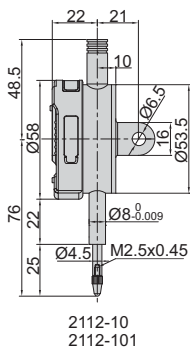


## DIGITAL INDICATORS (STANDARD TYPE)

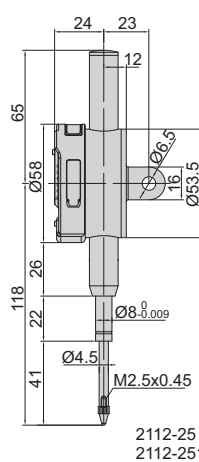
**INSPECTION CERTIFICATE**  
TRACEABLE TO NIST

DATA OUTPUT

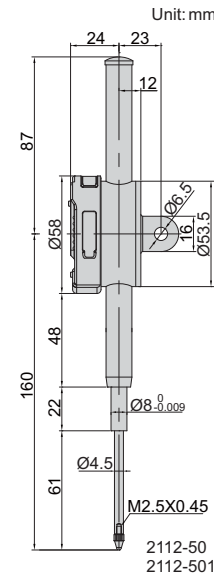
spindle lift knob is included



2112-10



2112-251



2112-501

- Button function: on/off, inch/mm, zero, data preset, change measuring direction, absolute/incremental measurement
- Keep preset data in memory after restart
- CR2032 battery, automatic power off
- Data output
- Optional accessory: data output cable (code 7315-50M, 7302-40M, 7305-40M), backs (page 164~165), contact points (page 161~163)

### Resolution 0.001mm/0.00005"

Code	Range	Accuracy	Hysteresis	Remark
2112-101F*	12.7mm/0.5"	5µm	2µm	flat back
2112-251F*	25.4mm/1"	5µm	3µm	flat back
2112-501F*	50.8mm/2"	6µm	3µm	flat back
2112-101*	12.7mm/0.5"	5µm	2µm	lug back
2112-251*	25.4mm/1"	5µm	3µm	lug back
2112-501*	50.8mm/2"	6µm	3µm	lug back

### Resolution 0.01mm/0.0005"

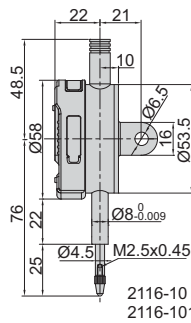
Code	Range	Accuracy	Hysteresis	Remark
2112-10F*	12.7mm/0.5"	20µm	10µm	flat back
2112-25F*	25.4mm/1"	20µm	10µm	flat back
2112-50F*	50.8mm/2"	30µm	10µm	flat back
2112-10*	12.7mm/0.5"	20µm	10µm	lug back
2112-25*	25.4mm/1"	20µm	10µm	lug back
2112-50*	50.8mm/2"	30µm	10µm	lug back

\*Supplied with manufacturer inspection certificate traceable to NIST USA

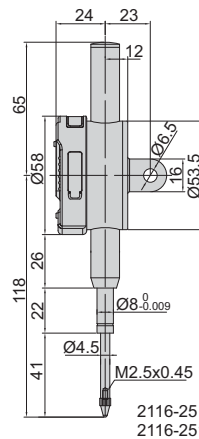
**INSPECTION CERTIFICATE**  
TRACEABLE TO NIST

DATA OUTPUT

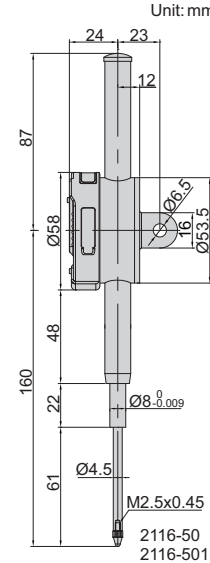
spindle lift knob is included



2116-10



2116-251



2116-501

- Button function: on/off, zero, change measuring direction, data preset, absolute/incremental measurement
- Keep preset data in memory after restart
- CR2032 battery, automatic power off, data output
- Optional accessory: data output cable (code 7315-50M, 7302-40M, 7305-40M), backs (page 164~165), contact points (page 161~163)

### Resolution 0.001mm

Code	Range	Accuracy	Hysteresis	Remark
2116-101F*	12.7mm	5µm	2µm	flat back
2116-251F*	25.4mm	5µm	3µm	flat back
2116-501F*	50.8mm	6µm	3µm	flat back
2116-101*	12.7mm	5µm	2µm	lug back
2116-251*	25.4mm	5µm	3µm	lug back
2116-501*	50.8mm	6µm	3µm	lug back

### Resolution 0.01mm

Code	Range	Accuracy	Hysteresis	Remark
2116-10F*	12.7mm	20µm	10µm	flat back
2116-25F*	25.4mm	20µm	10µm	flat back
2116-50F*	50.8mm	30µm	10µm	flat back
2116-10*	12.7mm	20µm	10µm	lug back
2116-25*	25.4mm	20µm	10µm	lug back
2116-50*	50.8mm	30µm	10µm	lug back

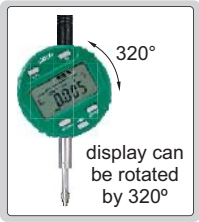
\*Supplied with manufacturer inspection certificate traceable to NIST USA

# DIGITAL INDICATORS (ADVANCED TYPE)

DATA OUTPUT

**INSPECTION CERTIFICATE**  
TRACEABLE TO NIST

7



display can be rotated by 320°

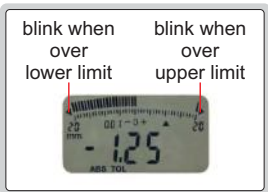
spindle lift knob is included



analog pointer



warning when over tolerance



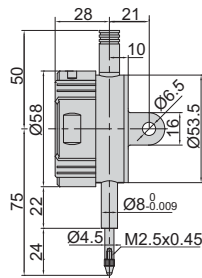
2103-10



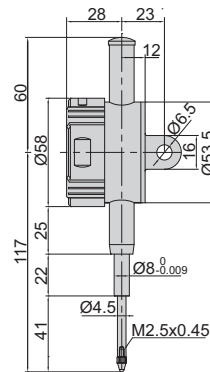
2104-25



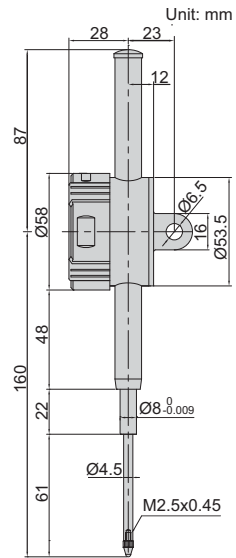
2103-50



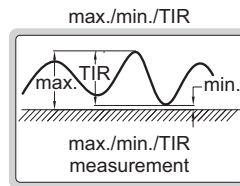
2103-10  
2104-10



2103-25  
2104-25



2103-50  
2104-50



- Reading in digital and analog
- Display can be rotated by 320°
- Button function: tolerance Go and No-Go display, data preset, measuring direction change, max./min./TIR measurement, inch/metric conversion, absolute/incremental measurement
- Keep preset data and tolerance data in memory after restart
- CR2032 battery, automatic power off, data output
- Optional accessory: data output cable (code 7315-50M, 7302-40M, 7305-40M), backs (page 164~165), contact points (page 161~163)

### Resolution 0.001mm/0.00005"

Code	Range	Accuracy	Hysteresis	Remark
2103-10F*	12.7mm/0.5"	5µm	2µm	flat back
2103-25F*	25.4mm/1"	5µm	3µm	flat back
2103-50F*	50.8mm/2"	6µm	3µm	flat back
2103-10*	12.7mm/0.5"	5µm	2µm	lug back
2103-25*	25.4mm/1"	5µm	3µm	lug back
2103-50*	50.8mm/2"	6µm	3µm	lug back

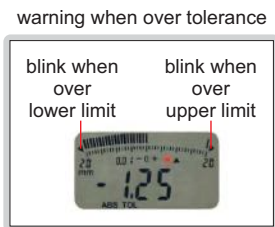
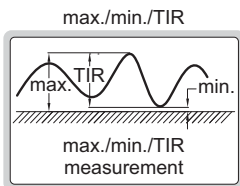
### Resolution 0.01mm/0.0005"

Code	Range	Accuracy	Hysteresis	Remark
2104-10F*	12.7mm/0.5"	20µm	10µm	flat back
2104-25F*	25.4mm/1"	20µm	10µm	flat back
2104-50F*	50.8mm/2"	30µm	10µm	flat back
2104-10*	12.7mm/0.5"	20µm	10µm	lug back
2104-25*	25.4mm/1"	20µm	10µm	lug back
2104-50*	50.8mm/2"	30µm	10µm	lug back

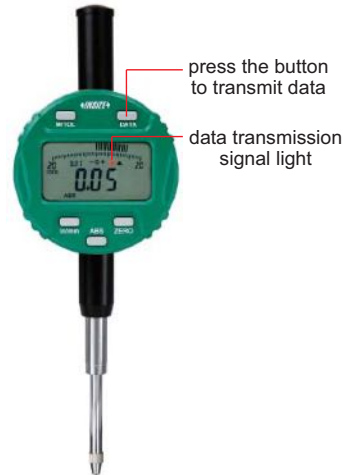
\* Supplied with manufacturer inspection certificate traceable to NIST USA

## DIGITAL INDICATORS (WITH TRANSMIT BUTTON AND LIGHT)

DATA  
OUTPUT



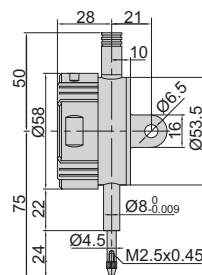
2103-10Q



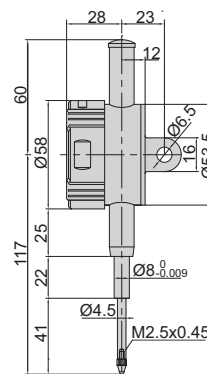
2104-25Q



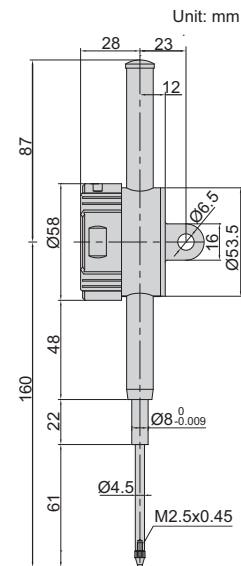
2103-50Q



2103-10Q  
2104-10Q



2103-25Q  
2104-25Q



2103-50Q  
2104-50Q

spindle lift knob  
is included



- Reading in digital and analog
- Display can be rotated by 320°
- Button function: on/off, zero, tolerance Go and No-Go display, data preset, measuring direction change, max./min./TIR measurement, inch/metric conversion, absolute/incremental measurement, data output
- Keep preset data and tolerance data in memory after restart
- CR2032 battery, automatic power off
- Data output
- Optional accessory: data output cable, backs (page 164~165), contact points (page 161~163)

### Resolution 0.001mm/0.00005"

Code	Range	Accuracy	Hysteresis	Remark
2103-10FQ*	12.7mm/0.5"	5µm	2µm	flat back
2103-25FQ*	25.4mm/1"	5µm	3µm	flat back
2103-50FQ*	50.8mm/2"	6µm	3µm	flat back
2103-10Q*	12.7mm/0.5"	5µm	2µm	lug back
2103-25Q*	25.4mm/1"	5µm	3µm	lug back
2103-50Q*	50.8mm/2"	6µm	3µm	lug back

### Resolution 0.01mm/0.0005"

Code	Range	Accuracy	Hysteresis	Remark
2104-10FQ*	12.7mm/0.5"	20µm	10µm	flat back
2104-25FQ*	25.4mm/1"	20µm	10µm	flat back
2104-50FQ*	50.8mm/2"	30µm	10µm	flat back
2104-10Q*	12.7mm/0.5"	20µm	10µm	lug back
2104-25Q*	25.4mm/1"	20µm	10µm	lug back
2104-50Q*	50.8mm/2"	30µm	10µm	lug back

\* Supplied with manufacturer inspection certificate traceable to NIST USA

# WATERPROOF DIGITAL INDICATORS

**INSPECTION CERTIFICATE**  
TRACEABLE TO NIST

WATERPROOF

DATA OUTPUT

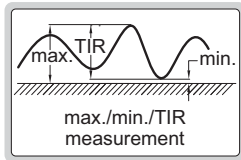
7



spindle lift knob is included (except 2115-101/101F, 2115-10/10F)



max./min./TIR



2115-10

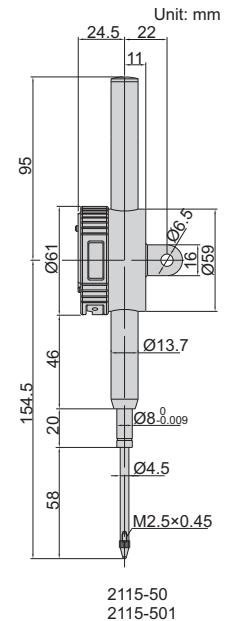
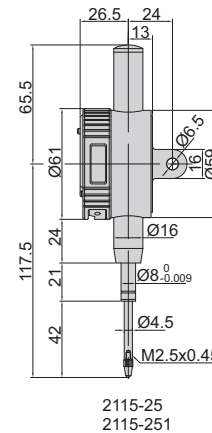
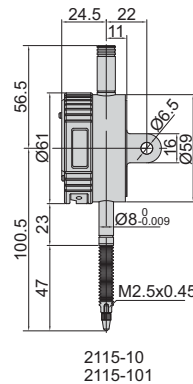


2115-25



2115-50

- Dust/waterproof
- Button function: on/off, zero, mm/inch, data preset, tolerance, change measuring direction, max./min./TIR measurement, absolute/incremental measurement
- Keep preset data and tolerance data in memory after restart
- CR2032 battery, automatic power off
- Data output
- Optional accessory: data output cable (code 7315-50, 7302-SPC3A, 7305-C01), backs (page 164~165), contact points (page 161~163)



## Resolution 0.001mm/0.00005"

Code	Range	Dust/waterproof	Accuracy	Hysteresis	Remark
2115-101*	12.7mm/0.5"	IP65	5µm	2µm	lug back
2115-251*	25.4mm/1"	IP54	5µm	3µm	lug back
2115-501*	50.8mm/2"	IP54	6µm	3µm	lug back
2115-101F*	12.7mm/0.5"	IP65	5µm	2µm	flat back
2115-251F*	25.4mm/1"	IP54	5µm	3µm	flat back
2115-501F*	50.8mm/2"	IP54	6µm	3µm	flat back

## Resolution 0.01mm/0.0005"

Code	Range	Dust/waterproof	Accuracy	Hysteresis	Remark
2115-10*	12.7mm/0.5"	IP65	20µm	10µm	lug back
2115-25*	25.4mm/1"	IP54	20µm	10µm	lug back
2115-50*	50.8mm/2"	IP54	30µm	10µm	lug back
2115-10F*	12.7mm/0.5"	IP65	20µm	10µm	flat back
2115-25F*	25.4mm/1"	IP54	20µm	10µm	flat back
2115-50F*	50.8mm/2"	IP54	30µm	10µm	flat back

\*Supplied with manufacturer inspection certificate traceable to NIST USA

**INSPECTION CERTIFICATE**  
TRACEABLE TO NIST

ONE BATTERY FOR 4000 WORKING HOURS

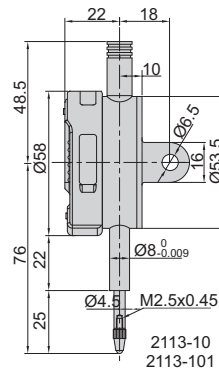
DATA OUTPUT

## NO AUTO POWER OFF DIGITAL INDICATORS

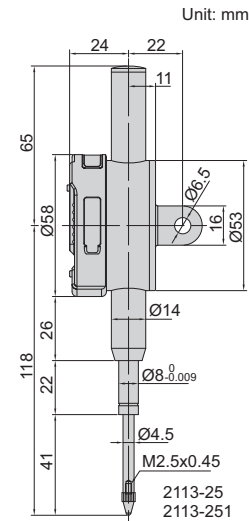
spindle lift knob is included



- No auto power off, tracking the deformation of mould and steel structure for a long time
- Low power consumption
- Button function: on/off, zero, inch/mm, data preset, change measuring direction, absolute/incremental measurement
- Keep preset data in memory after restart
- CR2032 battery
- Data output
- Optional accessory: data output cable (code 7315-50M, 7302-40M, 7305-40M), backs (page 164~165), contact points (page 161~163)



2113-10



2113-251

Resolution 0.001mm/0.00005"

Code	Range	Accuracy	Hysteresis	Remark
2113-101F*	12.7mm/0.5"	5µm	2µm	flat back
2113-251F*	25.4mm/1"	5µm	3µm	flat back
2113-101*	12.7mm/0.5"	5µm	2µm	lug back
2113-251*	25.4mm/1"	5µm	3µm	lug back

Resolution 0.01mm/0.0005"

Code	Range	Accuracy	Hysteresis	Remark
2113-10F*	12.7mm/0.5"	20µm	10µm	flat back
2113-25F*	25.4mm/1"	20µm	10µm	flat back
2113-10*	12.7mm/0.5"	20µm	10µm	lug back
2113-25*	25.4mm/1"	20µm	10µm	lug back

\*Supplied with manufacturer inspection certificate traceable to NIST USA

**INSPECTION CERTIFICATE**  
TRACEABLE TO NIST

DATA OUTPUT

## DIGITAL INDICATORS (FOR HIGH SPEED MOVING OF SPINDLE)

ATTENTION: LARGE POWER CONSUMPTION, A BATTERY CAN BE USED FOR ABOUT HALF A YEAR

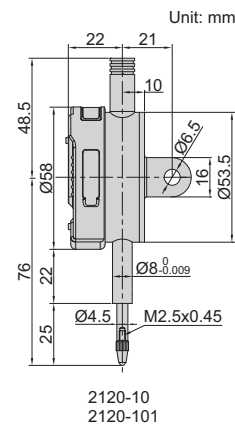
spindle lift knob is included



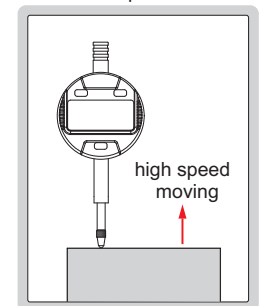
- For high speed moving of spindle
- Large power consumption, a battery can be used for about half a year
- Button function: on/off, zero, inch/mm, zero, data preset, change measuring direction, absolute/incremental measurement
- Keep preset data in memory after restart
- CR2032 battery, automatic power off
- Data output
- Optional accessory: data output cable (code 7315-50M, 7302-40M, 7305-40M), backs (page 164~165), contact points (page 161~163)



2120-10



for high speed moving of spindle



Resolution 0.001mm/0.00005"

Code	Range	Accuracy	Hysteresis	Remark
2120-101F*	12.7mm/0.5"	5µm	2µm	flat back
2120-101*	12.7mm/0.5"	5µm	2µm	lug back

Resolution 0.01mm/0.0005"

Code	Range	Accuracy	Hysteresis	Remark
2120-10F*	12.7mm/0.5"	20µm	10µm	flat back
2120-10*	12.7mm/0.5"	20µm	10µm	lug back

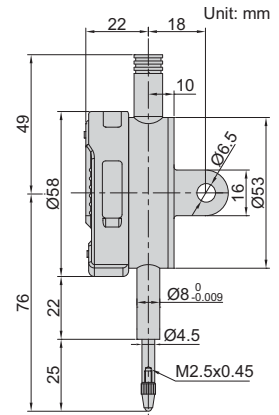
\*Supplied with manufacturer inspection certificate traceable to NIST USA

## ADJUSTABLE COEFFICIENT DIGITAL INDICATORS

- DISPLAY READING = COEFFICIENT X SPINDLE MOVEMENT.  
The coefficient can be adjusted from 0 to 9.9999. For example, coefficient is 4.5562, spindle moves 3.60mm, display reading is 4.5562 x 3.60=16.40mm
- Button function: on/off, zero, data preset, inch/mm, coefficient set, measuring direction change
- Keep preset data in memory after restart
- CR2032 battery, automatic power off
- Data output
- Optional accessory: data output cable (code **7315-50M**, **7302-40M**, **7305-40M**), backs (page 164~165), contact points (page 161~163)



2501-10



DATA OUTPUT

INSPECTION CERTIFICATE  
TRACEABLE TO NIST

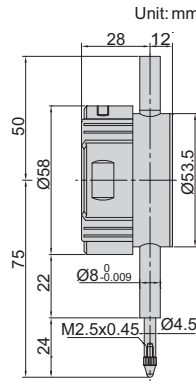
Code	Range	Resolution	Accuracy	Hysteresis	Remark
2501-10*	12.7mm/0.5"	0.01mm/0.0005"	20µm	10µm	lug back
2501-10F*	12.7mm/0.5"	0.01mm/0.0005"	20µm	10µm	flat back

\*Supplied with manufacturer inspection certificate traceable to NIST USA

7

## DIGITAL INDICATORS FOR BORE GAGES

- Specially designed for bore gages
- The minimum value tracking function can find the diameter automatically
- Read the diameter directly, after inputting the size of setting ring
- Reading in digital and analog
- Display can be rotated by 320°
- Button function: minimum value tracking, calibration, data preset, inch/metric conversion, absolute/incremental measurement
- Data remains after power off, no need to recalibrate after power on
- CR2032 battery, automatic power off
- Data output
- Optional accessory: data output cable (code **7315-50M**, **7302-40M**, **7305-40M**), backs (page 164~165), contact points (page 161~163), spindle lift knob (code **7332**)

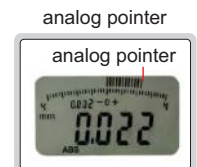
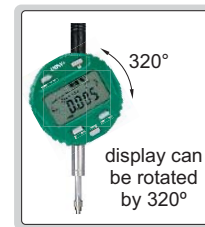


2108-10F

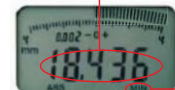
THE ORIGINAL DATA REMAINS AFTER POWER OFF

DATA OUTPUT

INSPECTION CERTIFICATE  
TRACEABLE TO NIST



Read the diameter directly, after inputting the size of setting ring.



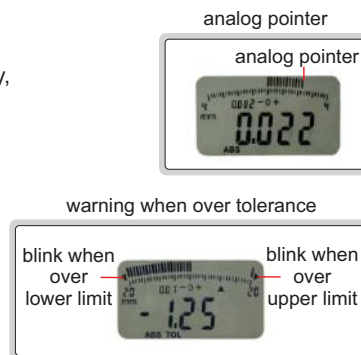
The minimum value tracking function can find the diameter automatically.

Code	Range	Resolution	Accuracy	Hysteresis	Remark
2108-10F*	12.7mm/0.5"	0.002mm/0.0001" (can switch to: 0.01mm/0.0005")	20µm	10µm	flat back
2108-101F*	12.7mm/0.5"	0.001mm/0.00005"	5µm	2µm	flat back

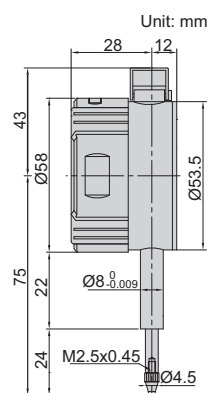
\*Supplied with manufacturer inspection certificate traceable to NIST USA

## DIGITAL INDICATORS WITH LIFTING LEVER

- Reading in digital and analog
- Display can be rotated by 320°
- Button function: tolerance Go and No-Go display, data preset, measuring direction change, max./min./TIR measurement, inch/metric conversion, absolute/incremental measurement
- Keep preset data and tolerance data in memory after restart
- CR2032 battery, automatic power off
- Data output
- Optional accessory: data output cable (code **7315-50M**, **7302-40M**, **7305-40M**), backs (page 164~165), contact points (page 161~163)



2109-10



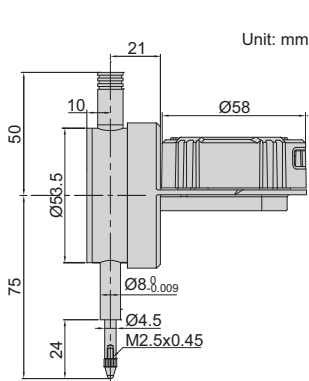
DATA OUTPUT

INSPECTION CERTIFICATE  
TRACEABLE TO NIST

Code	Range	Resolution	Accuracy	Hysteresis	Remark
2109-10*	10mm/0.4"	0.01mm/0.0005"	20µm	10µm	flat back
2109-101*	10mm/0.4"	0.001mm/0.00005"	5µm	2µm	flat back

\*Supplied with manufacturer inspection certificate traceable to NIST USA

## BACK PLUNGER TYPE DIGITAL INDICATORS



Unit: mm

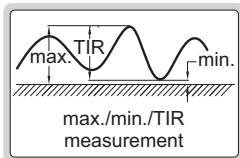


2118-10

display can rotate 320°



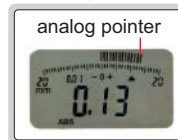
max./min./TIR



warning when over tolerance



analog pointer

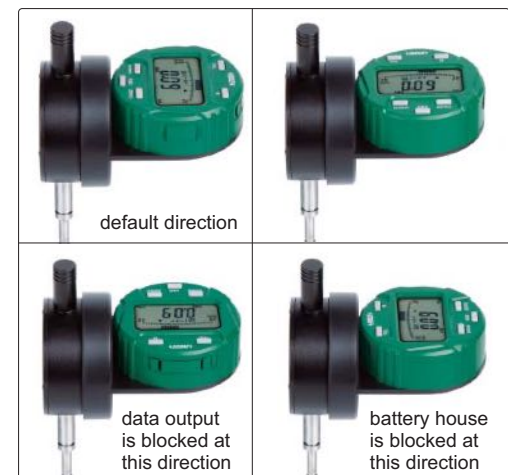


- Display can rotate 320°, and display direction is changeable
- Reading in digital and analog
- Button function: tolerance Go and No-Go display, data preset, measuring direction change, max./min./TIR measurement, inch/metric conversion, absolute/incremental measurement
- Keep preset data and tolerance data in memory after restart
- CR2032 battery, automatic power off
- Data output
- Optional accessory: data output cable (code 7315-50M, 7302-40M, 7305-40M), backs (page 164~165), contact points (page 161~163)

spindle lift knob is included



display direction is changeable



default direction

data output is blocked at this direction

battery house is blocked at this direction

Code	Range	Resolution	Accuracy	Hysteresis	Remark
2118-10 *	12.7mm/0.5"	0.01mm/0.0005"	20µm	10µm	flat back
2118-101 *	12.7mm/0.5"	0.001mm/0.00005"	5µm	2µm	flat back

\*Supplied with manufacturer inspection certificate traceable to NIST USA

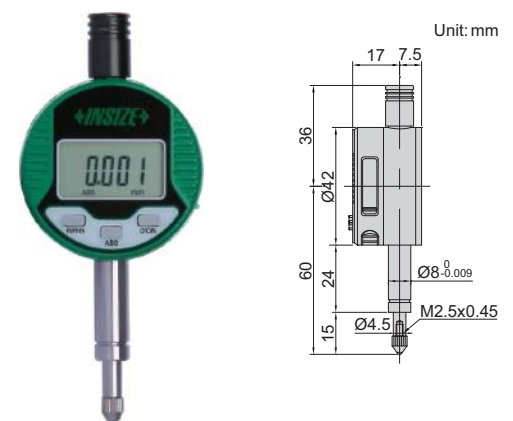
Remark: To change above direction, 4 fixing screws on the back of display need to be removed first.

## COMPACT DIGITAL INDICATORS

- Button function:
  - in/mm: short press for inch/metric conversion
  - long press to change measuring direction
  - ABS: short press for absolute/incremental measurement
  - long press to preset data
  - O/ON: short press to turn on when power is off
  - short press to set zero when power is on
  - long press to turn off
- Keep preset data in memory after restart
- CR1632 battery, automatic power off
- Data output
- Optional accessory: data output cable (code 7315-50, 7302-SPC3A, 7305-C01), contact points (page 161~163)

Code	Range	Resolution	Accuracy	Hysteresis	Remark
2114-5F *	5mm/0.2"	0.01mm/0.0005"	20µm	10µm	flat back
2114-51F *	5mm/0.2"	0.001mm/0.00005"	5µm	2µm	flat back

\*Supplied with manufacturer inspection certificate traceable to NIST USA



Unit: mm

2114-51F

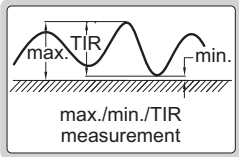
# LARGE STROKE DIGITAL INDICATORS

DATA OUTPUT

spindle lift knob is included



max./min./TIR



warning when over tolerance



- Button function: on/off, zero, mm/inch, data preset, tolerance, change measuring direction, max./min./TIR measurement, absolute/incremental measurement
- Keep preset data and tolerance data in memory after restart
- CR2032 battery, automatic power off
- Data output
- Optional accessory: data output cable (code 7315-50, 7302-SPC3A, 7305-C01), backs (page 164~165), contact points (page 161~163)

Resolution 0.01mm/0.0005"

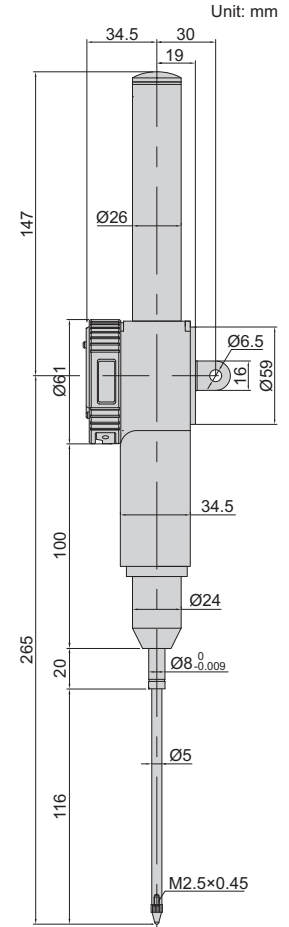
Code	Range	Accuracy	Hysteresis	Remark
2117-100	100mm/4"	30µm	10µm	lug back

Resolution 0.001mm/0.00005"

Code	Range	Accuracy	Hysteresis	Remark
2117-1001	100mm/4"	9µm	3µm	lug back



2117-100



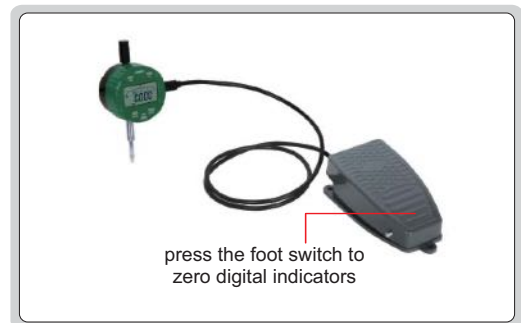
# ZEROING FOOT SWITCHES

- For zeroing of digital indicators



7360-1

application



Code	Description	Interface of digital indicators	Applicable products
7360-1	zeroing foot switch with cable (length 2.5m)		for digital indicators
7360-1M			

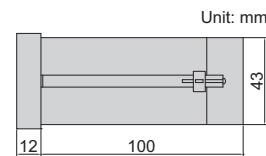
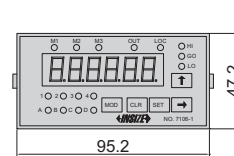
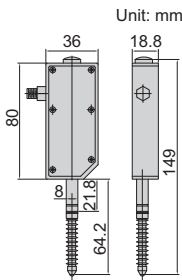
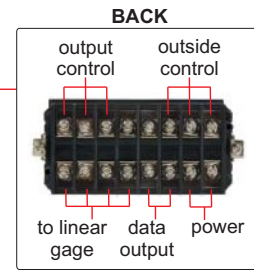




linear gage



display unit  
7106-1



application



- Linear gage: shock-proof, water proof, dust proof, suitable for high speed movement, long working life
- Display unit: set tolerance and make judgment (out of upper tolerance, within tolerance, out of lower tolerance), output the judgment to control outside devices, set zero and hold reading from outside

## LINEAR GAGE SPECIFICATION

Code	7106-11	7106-12
Measuring range	12mm/0.47"	12mm/0.47"
Resolution	0.01mm/0.0004"	0.001mm/0.00004"
Accuracy	20µm	5µm
Hysteresis	10µm	2µm
Measuring principle	capacity system	
Voltage	5V	
Sampling frequency	100 times/sec.	
Working life	ten million times	
Dust/waterproof	IP65	
Measuring force	1.5N	
Cable length	2m	
Data output	four-core wire	

## DISPLAY UNIT SPECIFICATION

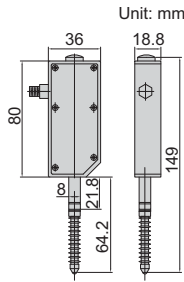
Code	7106-1
Display	6 digits
Quantity of linear gages to be connected	1 pc
Tolerance	set tolerance and make judgment with alarm and lights (out of upper tolerance, within tolerance, out of lower tolerance)
Output control	output the tolerance judgment (out of upper tolerance, within tolerance, out of lower tolerance) to control outside devices
Outside control	control the display units from outside (set zero, hold reading)
Data output	connect to PC
Power supply	DC 9~24V

# MULTI LINEAR GAGE SYSTEM

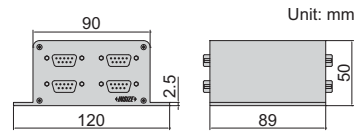
LINEAR GAGE  
**IP65**  
WATERPROOF



linear gage



4-channel interface box  
7107-1



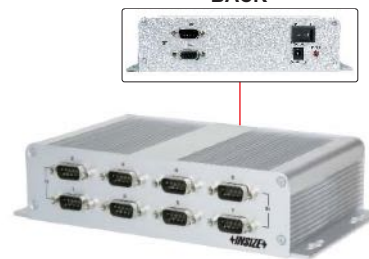
software CD  
(included)

application

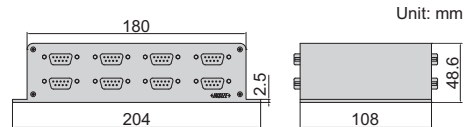
out of lower tolerance (red)    out of upper tolerance (red)    within tolerance (green)    within tolerance (green)    real time reading zero    set

collect data

BACK



8-channel interface box  
7107-2



- Interface boxes are supplied with software. In the software, it is possible to set tolerance of each channel and show judgment (red when out of tolerance, green when within tolerance), set zero, collect data manually or automatically (time is adjustable), output data to Excel, print report.
- Connection box (code: 7107-3) is needed to connect interface boxes, when two or more interface boxes are used. Maximum 4 interface boxes can be connected.

## LINEAR GAGE SPECIFICATION

Code	7107-11	7107-12
Measuring range	12mm/0.47"	12mm/0.47"
Resolution	0.01mm/0.0004"	0.001mm/0.00004"
Accuracy	20µm	5µm
Hysteresis	10µm	2µm
Measuring principle	capacity system	
Voltage	5V	
Sampling frequency	100 times/sec.	
Working life	ten million times	
Dust/waterproof	IP65	
Measuring force	1.5N	
Cable length	2m	
Data output	RS232	

## INTERFACE BOX SPECIFICATION

Code	7107-1	7107-2
Quantity of linear gages to be connected	4 pcs	8 pcs
Data output	RS232 and RS485	
Power supply	DC 9~24V	

## CONNECTION BOX (OPTIONAL) SPECIFICATION

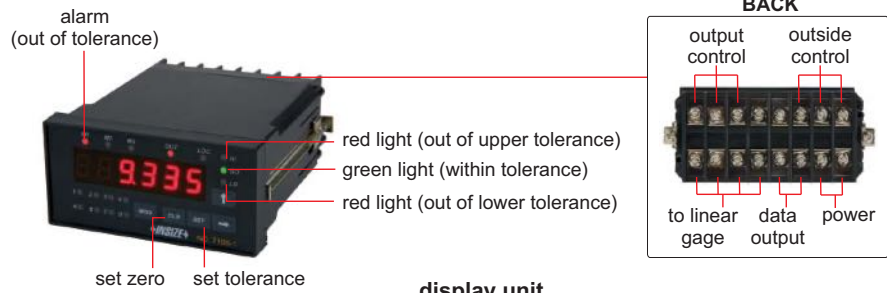
Code	7107-3
Quantity of interface boxes to be connected	4 pcs (maximum 4 interface boxes can be connected)
Data output	RS232 and RS485
Power supply	DC 9~24V



## CABLE FOR DIGITAL INDICATORS AND DISPLAY UNIT

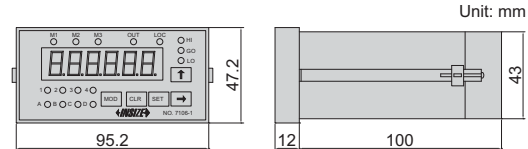


**cable of digital indicators  
7309-B01M**



**display unit  
7106-1**

application



- Display unit: set tolerance and make judgment (out of upper tolerance, within tolerance, out of lower tolerance), output the judgment to control outside devices, set zero and hold reading from outside, data preset, measuring direction change

### CABLE SPECIFICATION

Code	Description	Plug to product	Socket on product	Applicable product
7309-B01M	cable of digital indicator (length 2.5m)			 digital indicators

### DISPLAY UNIT SPECIFICATION

Code	7106-1
Display	6 digits
Quantity of digital indicator to be connected	1 pc
Tolerance	set tolerance and make judgment with alarm and lights (out of upper tolerance, within tolerance, out of lower tolerance)
Output control	output the tolerance judgment (out of upper tolerance, within tolerance, out of lower tolerance) to control outside devices
Outside control	control the display units from outside (set zero, hold reading)
Data output	connect to PC
Power supply	DC 9~24V

# CABLE FOR DIGITAL INDICATORS AND MULTI CHANNEL INTERFACE BOX



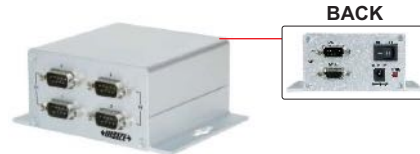
application



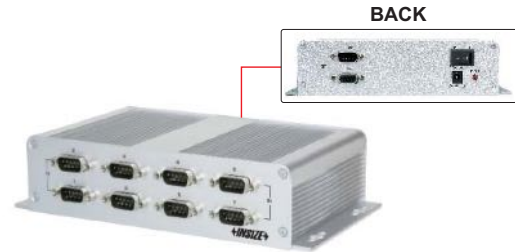
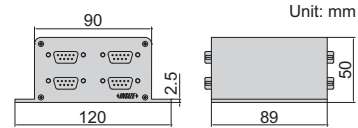
software CD (included)



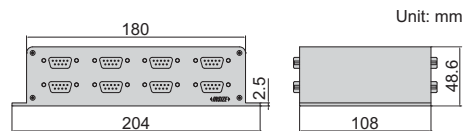
**cable of digital indicators  
7309-C01M**



**4-channel interface box  
7107-1**



**8-channel interface box  
7107-2**



- Interface boxes are supplied with software. In the software, it is possible to set tolerance of each channel and show judgment (red when out of tolerance, green when within tolerance), set zero, collect data manually or automatically (time is adjustable), output data to Excel, print report.
- Connection box (code: **7107-3**) is needed to connect interface boxes, when two or more interface boxes are used. Maximum 4 interface boxes can be connected.

## CABLE SPECIFICATION

Code	Description	Plug to product	Socket on product	Applicable product
7309-C01M	cable of digital indicator (length 2 m)			 digital indicators

## INTERFACE BOX SPECIFICATION

Code	7107-1	7107-2
Quantity of digital indicators to be connected	4 pcs	8 pcs
Data output	RS232 and RS485	
Power supply	DC 9~24V	

## CONNECTION BOX (OPTIONAL) SPECIFICATION

Code	7107-3
Quantity of interface boxes to be connected	4 pcs (maximum 4 interface boxes can be connected)
Data output	RS232 and RS485
Power supply	DC 9~24V