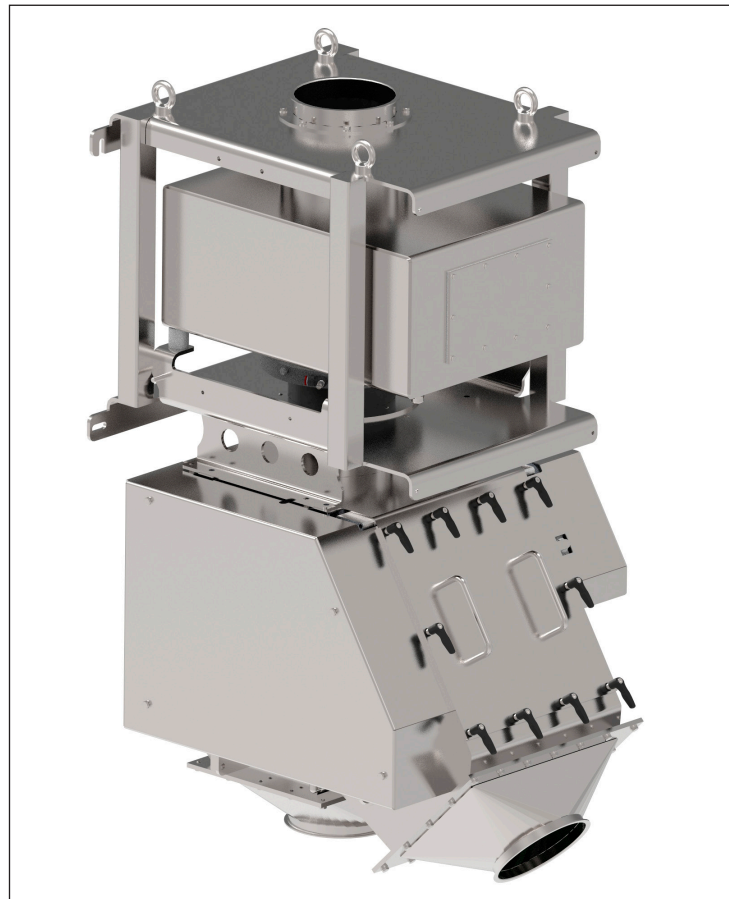


RAPID 8000

Metal separator for free-fall applications

- Metal separator for the inspection of powdery, fibrous and chunky bulk materials
- Detects magnetic and non-magnetic metal contaminations
- Separation by way of swivel hopper
- Dust-proof reject outlet design
- Hygienic design for easy cleaning
- Complies with IFS and HACCP



- Separation unit and product-contacting metal parts completely made of stainless steel 1.4301 (AISI 304)
- Low mounting height even with large nominal widths guarantees easy integration of the metal separator in existing pipe systems
- Quick and minimum-effort installation due to standard Jacob connection system
- Auto-learn function or manual product compensation (no fixed setting) for improved adaptation to the intrinsic conductivity of the product to be inspected
- Increased interference immunity to electromagnetic pollution and vibration
- Highest scanning sensitivity for all metals

Function:

The RAPID 8000 metal separator is used for the inspection of bulk materials in free-fall conveyor pipes starting from a nominal width of 200 mm. It detects all magnetic and non-magnetic metal contaminations (steel, stainless steel, aluminium, ...) - even if such contaminations are embedded in the product. Metal contaminations are rejected by means of a swivel hopper. The reject outlet is of dust-proof design during normal operation.

The RAPID 8000 metal separator primarily is used in the food industry in applications with high hygienic demands.

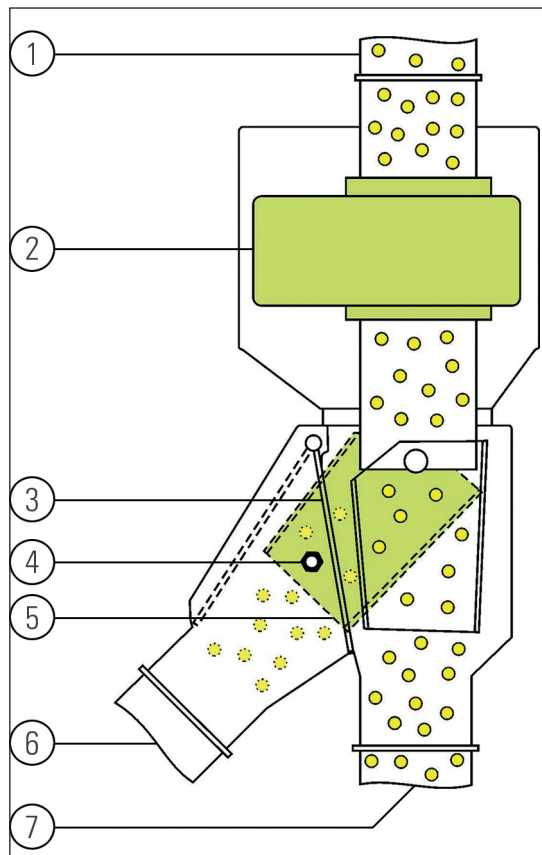
GENIUS ONE control unit:

Common features:

- Highest sensitivity for all metals (2-channel technology)
- Digital signal processing and quartz-stable search frequency
- State-of-the-art microprocessor technology with self-monitoring, auto-balancing, and temperature compensation
- Product compensation with auto-learn function
- Multi-product memory
- Password protection / access protection
- Special EMC combifilter for suppressing external interference

(For further information please refer to the "Control Unit" GENIUS ONE brochure).

Function diagram:



- | | | |
|--------------------|-------------------|------------------|
| 1) Inlet pipe | 2) Detection coil | 3) Sealing flap |
| 4) Metal | 5) Swivel hopper | 6) Reject outlet |
| 7) Material outlet | | |

Application:

- Incoming inspection (product purity and machine protection) of coarse spices with a high dust content, bulk materials with coarse to fine-grained contents, ingredients, raw materials, etc. prior to the processing machine (e.g. mill).
- Quality inspection (product purity) of food powders, sugar, salt, chemical additives (e.g. ascorbic acid, surfactants), etc. directly before filling in bigbags and silos.

Typical fields of application:

- Chemical industry
- Food industry
- Animal feed industry

For detailed information please request our technical data sheet, or contact our experienced Sesotec sales consultants - by telephone or at your place.