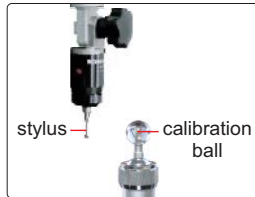




lens with coaxial light (optional, must be installed in factory)



probe (optional), includes Ø2mm and Ø3mm styli, Ø25mm calibration ball, measuring accuracy is 10µm



ISD-V250A

computer is included

**SPECIFICATION**

Code	ISD-V150A	ISD-V250A	ISD-V300A	ISD-V400A
Measuring range (X×Y×Z)	150×100×200mm	250×150×200mm	300×200×200mm	400×300×200mm
Stage size	354×228mm	450×280mm	500×330mm	606×466mm
Stage glass size	210×160mm	306×196mm	350×250mm	450×350mm
Resolution of X/Y/Z axis	0.5µm			
Accuracy of X/Y axis	≤(3.5+L/100)µm (L is the measuring length in mm)			
Repeatability of X/Y axis	2µm			
Objective	0.7X~4.5X (zoom)			
Working distance	92mm			
Magnification	33X~195X (on 19" monitor)			
Camera	1/3" color CCD, 0.3M pixel			
Illumination	surface and contour with adjustable LED			
Max. height of workpiece	160mm			
Max. weight of workpiece	20kg			
Operation system	Windows 7/8/10			
Drive method	manual			
Power supply	110/220V, 50/60Hz			
Dimension (L×W×H)	560×540×850mm	760×600×900mm	760×600×900mm	970×670×940mm
Weight	100kg	120kg	140kg	240kg

**STANDARD DELIVERY**

Main unit	1 pc
Computer	1 pc
Calibration glass chart	1 pc
Clay	1 pc
Foot switch	1 pc
Anti-dust cover	1 pc

**OPTIONAL ACCESSORY**

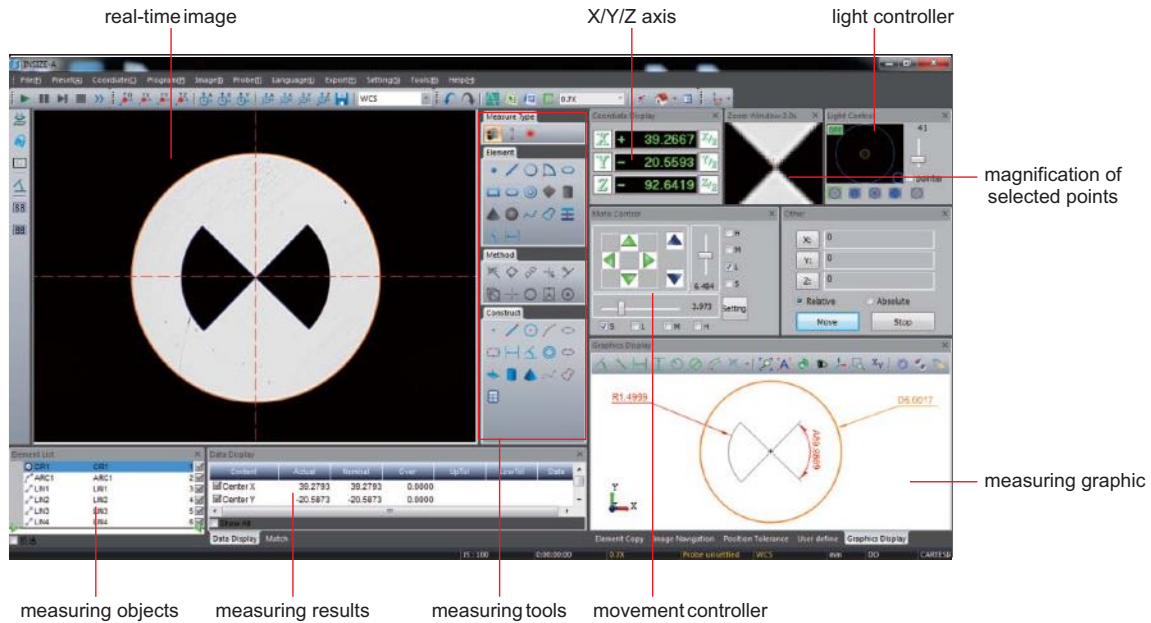
0.5X auxiliary objective	Code: <b>ISD-V-OB05X</b> Working distance: 175mm Magnification: 16.5~97.5X (on 19" monitor)
2X auxiliary objective	Code: <b>ISD-V-OB2X</b> Working distance: 36mm Magnification: 66~390X (on 19" monitor)
Probe	Code: <b>ISD-V-PROBE</b> Includes Ø2mm and Ø3mm styli, Ø25mm calibration ball
Vision measuring system with coaxial light lens (with computer)	Code: <b>ISD-V150ACL, ISD-V250ACL, ISD-V300ACL, ISD-V400ACL</b>
Office software	Code: <b>7313-OFFICE</b>

To be continued

Continued from previous page

### SOFTWARE (INCLUDED)

- Refer to page 327~328 for details



## CNC VISION MEASURING SYSTEMS



MOTORIZED ZOOM LENS IS OPTIONAL

16



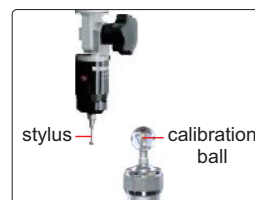
software CD (included)



- Automatic edge-detection, focus, measuring, contour scanning, calibration, etc.
- Servo motors for X, Y, Z axis
- SPC function for large quantity measurement
- Measuring software is included (page 327~328)

### STANDARD DELIVERY

Main unit	1 pc
Video card with dongle	1 pc
Software disc	1 pc
Computer	1 pc
19.5" Display	1 pc
Len with coaxial light	1 pc
Controller	1 pc
Calibration glass chart	1 pc
Laser positioner	1 pc
Clay	1 pc
Anti-dust cover	1 pc



probe (optional), includes Ø2mm and Ø3mm styli, Ø25mm calibration ball, measuring accuracy is 10µm

To be continued

Continued from previous page

**SPECIFICATION**

Code	ISD-V220CNCA**	ISD-V270CNCA**	ISD-V370CNCA**
Measuring range (X×Y×Z)	220×120×150mm	270×170×150mm	370×270×150mm
Stage size	450×280mm	500×330mm	606×466mm
Glass stage size	306×196mm	350×250mm	450×350mm
Resolution of X/Y/Z axis	0.5µm		
Accuracy of X/Y axis	≤(2.5+L/100)µm (L is the measuring length in mm)		≤(3.5+L/100)µm (L is the measuring length in mm)
Repeatability of X/Y axis	2µm		
Objective	0.7X~4.5X (zoom)		
Working distance	92mm		
Magnification	20X~128X (on 19.5" monitor)		
Camera	1/2" color CCD, 0.4M pixel		
Illumination	surface	coaxial light, programmable segmented ring light	
	contour	adjustable LED light	
View field (diagonal length)	1.7~11.1mm		
Max. height of workpiece	160mm		
Max. weight of workpiece	30kg		
Operation system	Windows 7/8/10		
Drive method	Automatic		
Power supply	220V, 50/60Hz**		
Dimension (L×W×H)	760×600×900mm	760×600×900mm	970×670×940mm
Weight	146kg	168kg	266kg

\*\* Add "-U" on code No. when power supply is 110V, 50/60Hz

**OPTIONAL ACCESSORY**

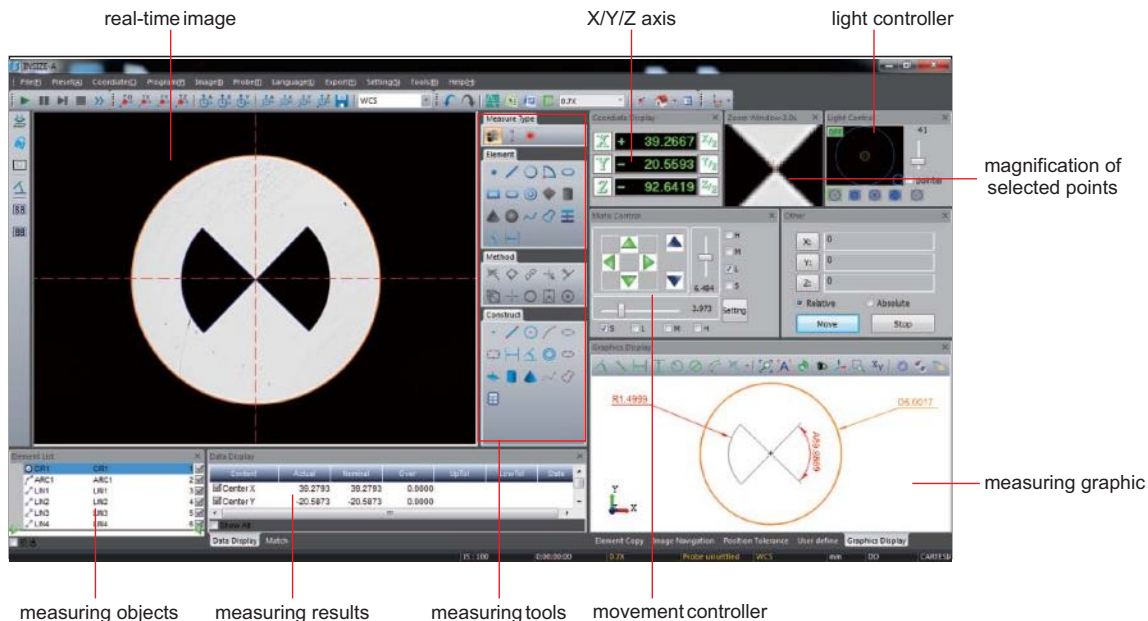
0.5X auxiliary objective	Code: <b>ISD-V-OB05X</b> Working distance: 175mm Magnification: 10~64X (on 19.5" monitor)
2X auxiliary objective	Code: <b>ISD-V-OB2X</b> Working distance: 36mm Magnification: 40~256X (on 19.5" monitor)
Probe	Code: <b>ISD-V-PROBE</b> Includes Ø2mm and Ø3mm styli, Ø25mm calibration ball
Office software	Code: <b>7313-OFFICE</b>
Desk	Code: <b>ISD-V-DESK</b>

desk (optional)



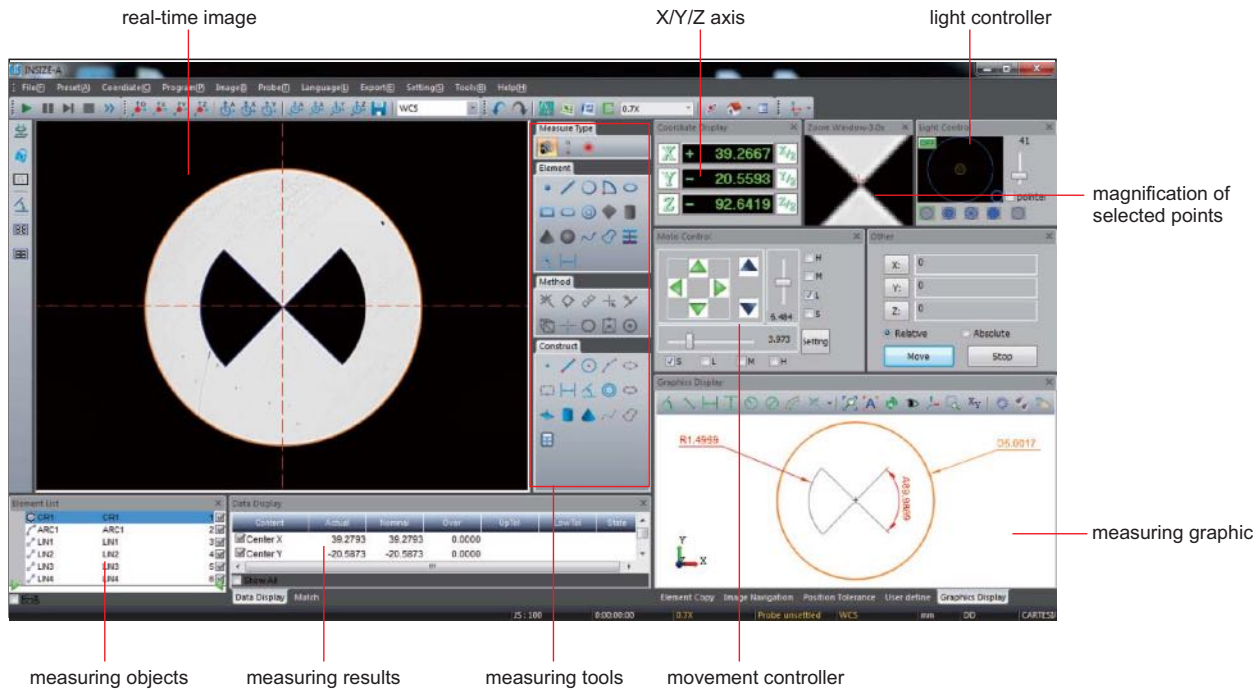
**SOFTWARE (INCLUDED)**

- Refer to page 327~328 for details



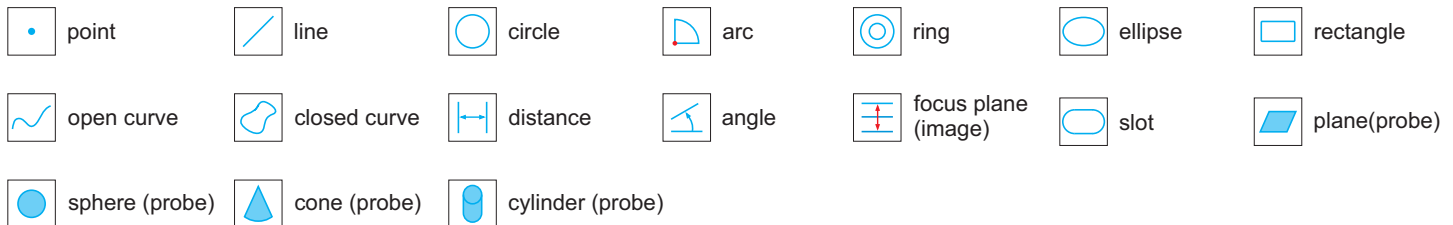
# VISION MEASURING SOFTWARE

SOFTWARE FOR VISION MEASURING SYSTEMS  
ISD-V SERIES AND ISD-VMM SERIES

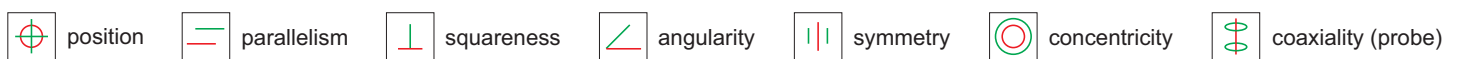


- Operation system: Windows 7/10
- Language: English
- Control features: assistant focus (manual machines), auto focus (CNC machines), auxiliary light control, motion controlled by mouse (CNC machines), auto zoom lens (CNC machines)
- Image measuring methods: intelligent automatic edge detect, select points of an area, select points from multiple parts, select points via mouse, select adjacent points, select points via cross line, magnify to select points, comparatively select points, select points via probe, edge point, contour point
- Constructable elements: point, line, circle, arc, ellipse, rectangle, distance, angle, ring, slot, plane, cone, open curve, closed curve
- Support fixture (CNC machines), scanning, image navigation, user define, pixel calibration
- Measuring by image and probe, image and probe can be synchronized
- Measuring data can export to Excel, Word, SPC, measuring elements can export to dxf

Dimension measuring tools:



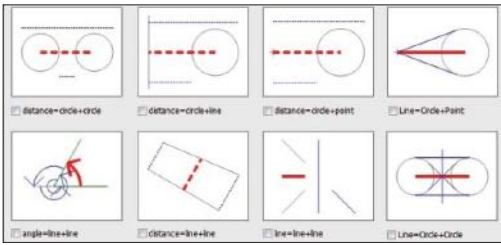
Geometric measuring tools:



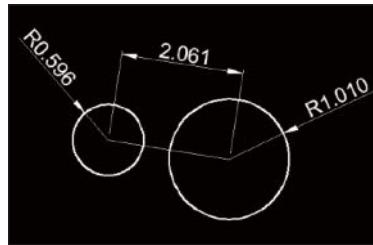
To be continued



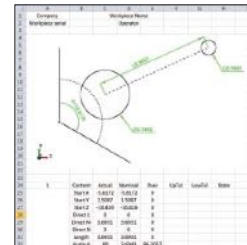
Measuring and element construct methods:



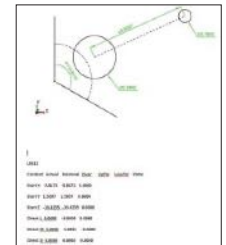
Export to CAD, EXCEL, WORD



CAD



EXCEL



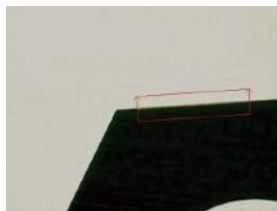
WORD

Edge-detection:

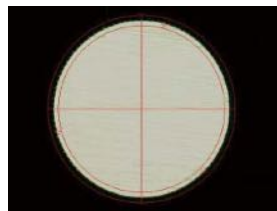
point tool



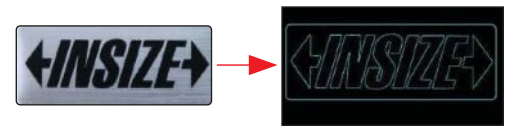
box tool



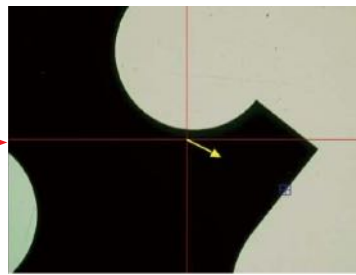
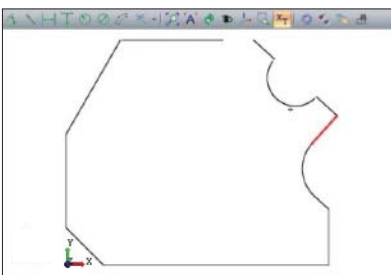
circle tool



Profile scanning:

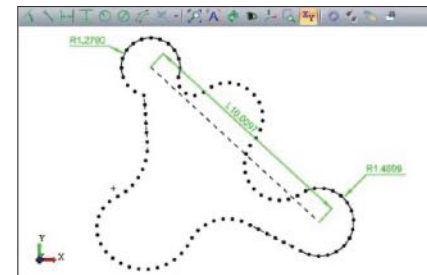


CAD measuring:

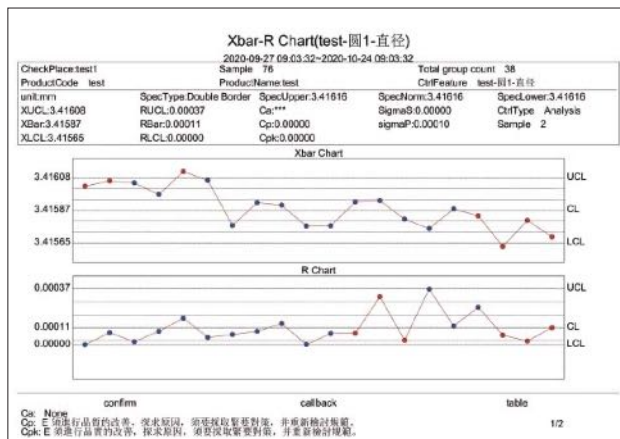


import CAD drawing, set the datum, establish coordinate system, then the software will automatically measure

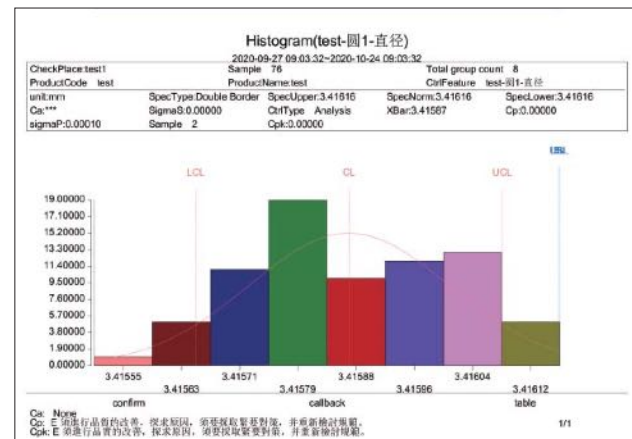
Contour scanning:



SPC analysis, import the measuring data to SPC module, generate Xbar-R chart, Xbar-S chart, Mid-R chart, X-Rs chart, Histogram, Sigma A and Sigma S chart, Cpk process chart, Process state analyse chart, Single process advice analyse chart



Xbar-R chart



Histogram