

**A FEW PRACTICAL BENEFITS:**

- Development, design, production:  
100 % Trotec
- High dehumidification capacity –  
optimized for low temperatures of less  
than 15 °C during construction drying
- Powerful rotation compressor
- Professional automatic hot gas defrost  
system based on bypass procedure
- Innovative central chassis, easy to re-  
move for fast cleaning and inspections
- Particularly maintenance-friendly:  
Plug-in electronics modules,  
easy to replace without tools
- Stackable to save space
- Robust and highly mobile with large  
wheels – transportable both in vertical  
and horizontal position
- Connection for external hygrostat
- Adjustable push handle

**ADDITIONAL BENEFITS TTK 900 MP:**

- VarioDry technology – unique in the  
world: The optimal setup for maximum  
drying performance in any operating  
environment
- Two-point hot gas defrosting for ex-  
tremely shortened defrosting times  
and thus considerably longer drying  
cycles

**100 % construction dryer:  
the name says it all**

It's not just a name that turns a commercial dehumidifier into a true construction dryer. The name is an obligation: the device must be able to dry large amounts of air in continuous operation, on the construction site, in cool environments.

This is why the construction dryers TTK 500 and TTK 900 MP have been consistently designed for a long lifetime and an extremely high dehumidification performance at low temperatures.

The air flow rate of both devices is optimally adapted to the dehumidification requirements of construction drying. On top of that, both devices are characterized by the lowest energy factor per litre in their class!

# Construction dryers of the TTK professional series

Professional TTK type construction dryer – synonym for pioneering drying technology, proven for decades



## Trotec's standard for professional construction dryers

Durability, robustness, reliability, high dehumidification performance and value retention, these characteristics define the coordinate system of an outstanding construction dryer – and our current TTK pro series follows this concept more uncompromisingly than ever before!

**The construction dryers TTK 500 and TTK 900 MP have everything a pro's heart desires – and nothing you don't really need!**

No superfluous "bells and whistles" to increase costs, reduce reliability or complicate maintenance or cleaning. Instead we focus on the essen-

tials: robust technology that is equally characterized by high reliability, mobility and dehumidification capacity, especially in cool environments.

No plastics, but an almost indestructible steel sheet construction for tough everyday use with optimum handling characteristics and an innovative central chassis for easy disassembly – and with plug-in electronics modules that can easily be replaced on site.

**All contributing to maximum operating times and minimized service times!**

**Refrigerant R-454C – less GWP, more efficiency and safety**



The non-toxic R-454C is ideally suited for the hermetically sealed refrigeration systems of the TTK construction dryers, is only flammable with high ignition energy and is not only characterized by a high COP (coefficient of performance), but also by a very low GWP (global warming potential) of less than 150 and an ODP (ozone depletion potential) of 0. This means that R-454C contributes at least 10 times less to the greenhouse effect than commonly used refrigerants.

TTR-KAT-KTTK-WM-27-EN

## Construction dryer TTK 500

Powerful even at low temperatures – high-performance professional condenser dryer in robust carriage design



The TTK 500 has been consistently designed to provide maximum mobility for ever-changing sites of operation and to withstand rough working conditions. This is why this construction dryer features not only a carriage with adjustable push handle, but also large wheels with non-marking rubber tyres – all combined in a robust metal housing.

### Universal construction dryer – newly defined

For storage or transport, the design of the TTK 500 allows the devices to be positioned closely together, so that many construction dryers can be transported to the site of operation with only one trip. In the warehouse, up to three devices can be stacked on top of one another, thus requiring even less floor space.

### Effective process for high dehumidification performance of up to max. 70 l/h

For an effective dehumidification, the TTK 500 comes equipped with a powerful automatic hot gas defrost system based on the bypass procedure. This system only requires very short defrost phases, which increases the performance level and makes the device ide-



The push handle of the TTK 500 can be locked in the horizontal or vertical position as required. This feature guarantees an ideal transport position at all times, for example for transport over larger distances or in staircases.



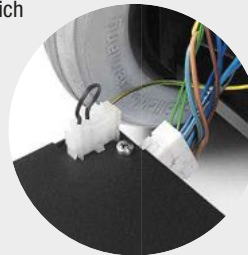
ally suited for an effective dehumidification in low-temperature surroundings such as unheated rooms.

The combination of a high dehumidification performance together with a minimized energy demand and a great mobility with a low floor space requirement makes the TTK 500 the ideal dehumidification solution even at low temperatures – for continuous operations also optionally available with a hygrostat and condensate pump.

### Innovative central chassis – low-maintenance modular design

The TTK 500 has an innovative central chassis from which the robust metal housing can be quickly and easily removed. Ideal for service, maintenance and cleaning tasks.

And the entire electronic equipment is not only specially enclosed and thus reliably protected against harmful deposits – it is also designed in a modular fashion and all individual electronics modules are provided with maintenance-friendly plug connections. The replacement of individual modules is therefore quick and easy, even on site: unplug, replace module, plug back in – done. **Maintenance-related periods of non-use can thus be reduced to a minimum.**



### Also available as stainless steel version TTK 500 ES



For dehumidification or permanent dry keeping applications in areas with special hygienic requirements or particularly reactive air environments the TTK 500 is also available as stainless steel version TTK 500 ES.

The stainless steel material features a very high corrosion resistance, is easy to clean and particularly resistant to various chemical solutions.

Just like the basic model, the TTK 500 ES, too, can optionally be equipped with an MID-compliant dual counter and controlled via an external hygrostat if required.



Trotec

Dehumidification

Humidification

Heating

Ventilation

Air conditioning

Air cleaning

Disinfection and Odour neutralization

Accessories





## Construction dryer TTK 900 MP

Easy to transport, hard to beat –  
out ultimate condenser dryer for professional drying applications

Owing to a perfect combination of an especially powerful and efficient rotation compressor, an utterly robust high-pressure radial fan as well as high-quality electronic and mechanical components, the TTK 900 MP can impress with an excellent dehumidification capacity, especially at low ambient temperatures.

let sides without dynamic pressure and can flow evenly through the room – an enormous practical advantage for the fast drying of large rooms!



At the same time, the TTK 900 MP has been consistently designed to provide maximum mobility for ever-changing sites of operation and to withstand rough working conditions. This is why the TTK 900 MP features not only a carriage with ad-



justable push handle, but also large wheels with non-marking rubber tyres – all combined in a robust metal housing.

For an effective dehumidification, the TTK 900 MP comes equipped with a powerful automatic hot gas defrost system based on the bypass procedure. This system only requires very short defrost phases, which increases the performance level and makes the device ideally suited for an effective dehumidification in low-temperature surroundings such as unheated rooms.

### Powerful air-circulating radial fan with dry air outlet on both sides



The push handle of the TTK 900 MP can be locked in the horizontal or vertical position as required. This feature guarantees an ideal transport position at all times, for example for transport over larger distances or in staircases.

Designed as reference class of professional construction dryers the TTK 900 MP practically leaves nothing to be desired. Its tough design and robust components ensure a permanently maximum dehumidification performance and value retention.

In order to quickly distribute the dry, dehumidified air in the entire room, the TTK 900 MP is fitted with a dry air outlet on both sides. This way, the dry air is blown out at a high volume by the high-pressure radial fan via two air out-

### TTK 900 MP with VarioDry technology – unique in the world!

The unique combination of an innovative heat exchanger design with optimised evaporator circuit and highly efficient EC radial fan makes it possible:

The TTK 900 MP can be easily adjusted to the desired operating environment and obtains the optimum setup for the respective type of application by means of just one switch setting. Both high relative humidity levels and lower temperatures (e.g. when drying new buildings) or lower relative humidity levels in warmer environments for water damage restorations are perfectly suitable for the device.



Simply select the construction drying or water damage restoration mode via the VarioDry function switch, and the TTK 900 MP automatically adjusts its device setup to the maximum drying performance in this operating mode!

### Benefit now from 20 % more efficiency than before

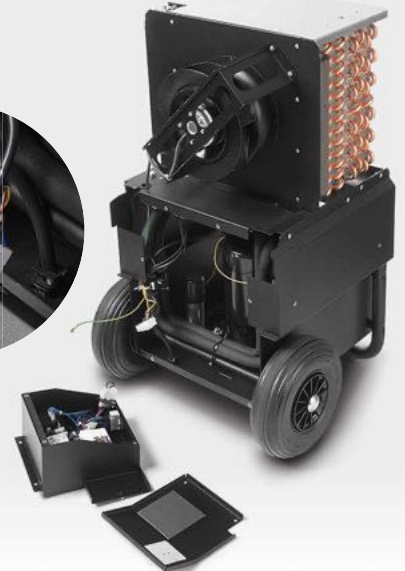
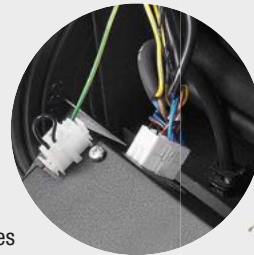
The TTK 900 MP impresses with 10 % more performance at 10 % less energy consumption compared to the predecessor model TTK 800. Thus, it can boast the best energy coefficient in its class as a result of an elaborately balanced energy management system! In plain words: **No other dryer in this area achieves a higher kW output in litres than the TTK 900 MP – across all fields of application, water damage restoration and drying new buildings.**

### Innovative central chassis – low-maintenance modular design

The TTK 900 MP has an innovative central chassis from which the robust metal housing can be quickly and easily removed. Ideal for service, maintenance and cleaning tasks.

And the entire electronic equipment is not only specially enclosed and thus reliably protected against harmful deposits – it is also designed in a modular fashion and all individual electronics modules are provided with maintenance-friendly plug connections. The replacement of individual modules is therefore quick and easy, even on site: unplug, replace module, plug back in – done.

**Maintenance-related periods of non-use can thus be reduced to a minimum.**



**Practical tip for quicker construction drying**



**You can halve drying time by combining fans and construction dryers:**

Each dryer is supplemented with a fan, which has a significant influence on the drying performance and therefore also the duration of the drying process.

The increased air circulation causes a quicker evaporation, for the higher the flow rate at the material surface, the sooner will the drying process be completed.

*Combinable axial fans can be found starting on page 98 ...*



**You need even more mobile construction drying power?**

If so, we recommend the version of the DH 160 with a wheeled transport frame.

Whilst featuring an otherwise identical design this industrial dryer is additionally equipped with a wheeled frame construction permitting quick site changes. The mobile model is optionally also available as stainless steel version.

*More information about the industrial condenser dryer DH 160 can be found starting on catalogue page 24 ...*

**Power consumption billing?**

For commercial billing the electricity consumption must be determined by means of an MID meter. Device without an MID meter? Then the socket outlet meter BX50 MID provides the optimum solution – further information can be found on page 163 ...



Technical data		TTK 500	TTK 900 MP
Article number		1.120.000.410	1.120.000.802
Dehumidification performance / 24 h [litres]	At 20 °C / 60 % RH	27	49
	At 30 °C / 80 % RH	58	96
	Max.	70	110
Air volume [m³/h]		400	660 to 850 <sup>1</sup>
Suitable for room sizes of up to [m³]	Construction drying	470	800
	Dry keeping	940	1,600
Operating range Temperature [°C] / Humidity [% RH]		5 to 35 / 35 to 90	3 to 40 / 20 to 90
Input voltage [V/Hz]		220 - 240 / 50	220 - 240 / 50
Power input [kW]		1.6	2.1
Nominal current consumption [A]		7.3	9.8
Refrigerant <sup>2</sup> Type / Amount [g]		R-454C / 650	R-454C / 900
GWP factor <sup>2</sup> / CO <sub>2</sub> equivalent <sup>2</sup> [t]		146 / 0.095	146 / 0.13
Sound level (distance 3 m) [dB(A)]		58	59
Length [mm]		438	500
Width [mm]		470	565
Height [mm]		870	960
Weight [kg]		52	69
<b>Standard equipment (extract) and options</b>		<b>TTK 500</b>	<b>TTK 900 MP</b>
Compressor		Rotating piston	Rotating piston
Fan		Axial fan	Radial fan
Automatic hot gas defrosting		■	■
Two-point hot gas defrosting		–	■
VarioDry technology		–	■
Hygrostat		□	□
Condensate pump		□	□
Operating hours counter		■	■
Energy consumption meter, MID-compliant <sup>3</sup>		Art. no. 7.140.000.903	–
Plug connection for external switching		■	■
Cable holder		■	■
Low-maintenance modular design		■	■
Adjustable push handle		■	■
Carriage design		■	■
Stackable construction		■	■
<b>Design option</b>		<b>TTK 500</b>	<b>TTK 900 MP</b>
Stainless steel AISI 316		Art. no. 1.120.000.414	–
<b>Available system accessories / recommended accessories</b>		<b>TTK 500</b>	<b>TTK 900 MP</b>
Air filter (consumables)		Art. no. 7.160.000.008	Art. no. 7.160.000.013
Condensate pump with automatic switch-off function, max. pump height 4.3 m		Art. no. 6.100.003.030	Art. no. 6.100.003.030
External hygrostat HG 110		Art. no. 6.100.002.044	Art. no. 6.100.002.044
Professional extension cable (230 V, 16 A)		Art. no. 7.333.000.376	Art. no. 7.333.000.376
Cable drum PVD2 Further cable drums and power distributors starting on page 168 ...		Art. no. 7.333.000.367	Art. no. 7.333.000.367

■ Standard equipment; □ Optionally available equipment; <sup>1</sup> depending on the preselected VarioDry operating mode; <sup>2</sup> Functionally, this device contains a hermetic system with fluorinated greenhouse gas as a refrigerant in the specified specifications and with a greenhouse gas potential corresponding to the indicated GWP factor. <sup>3</sup> **What does MID-compliant mean?** In some areas, the Measuring Instruments Directive (MID) replaces the previous regulation of national authorization and subsequent calibration. As a result, all energy meters in Europe used for energy consumption-based billing have to be MID-compliant from now on.

Trotec  
Dehumidification  
Humidification  
Heating  
Ventilation  
Air conditioning  
Air cleaning  
Disinfection and Odour neutralization  
Accessories