

BE50 Digital multimeter

Fully equipped multifunction measuring meter

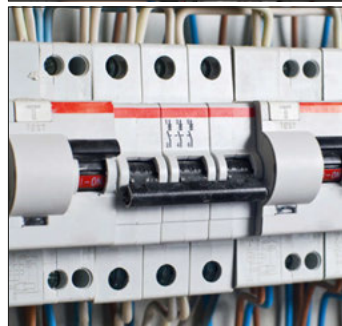


The BE50 is a digital multimeter, like one can only wish for, since it offers you spectacular possibilities of use for more than just electrical variables:

With altogether eleven measuring functions, automatic range selection, temperature measurement with type K contact sensor, hold function and display illumination this measuring device is suited for manifold fields of application in the industrial or semi-professional sector.

The fully equipped, practice-oriented BE50 with IP67 type of protection impresses with excellent quality finish and robustness:

Measuring device and measuring lines are doubly insulated and conform to protection class II. Moreover, this digital multimeter is extremely impact-, dust- and water-proof – and thus optimally suited for tough everyday usage!



A few practical benefits

- Digital multifunction measuring meter with eleven measuring functions
- Particularly hardwearing and powerful
- Automatic range selection
- CAT III 1,000 V / CAT IV 600 V
- Impact-proof housing
- IP67 type of protection – dust- and water-proof
- Function for non-contact voltage detection
- Insulation protection class II for measuring device and measuring lines
- Temperature measurement with type K contact sensor
- Hold function
- Backlit display
- Automatic switch-off



Technical data

Article number	3.510.205.250	
Display	LCD 4-digit	
Measuring range (Accuracy)	Voltage	U_{DC} 0.1 V up to 1,000 V, U_{AC} 0.1 mV up to 1,000 V ($U_{DC} \pm 1.2\%$, $U_{AC} \pm 2\%$)
	Current	I_{DC} 0.0001 A up to 10 A, I_{AC} 0 A up to 10 A ($I_{DC} \pm 1.5\%$, $I_{AC} \pm 2\%$)
	Capacity	10 pF up to 100 μ F ($\pm 3\%$)
	Resistance	0.1 Ω up to 10 M Ω ($\pm 1.2\%$)
	Frequency	1 mHz up to 10 MHz ($\pm 1.2\%$)
	Temperature	-20 $^{\circ}$ C up to 760 $^{\circ}$ C ($\pm 3.0\%$; $\pm 5\%$ $^{\circ}$ C)
	Duty cycle	0.1 % up to 99.9 % (1.2 %)
Measuring circuit category	CAT III (1,000 V), CAT IV (600 V)	
Safety	EN 61326, EN 61010-1, EN 61010-2-031	
Type of protection	IP67	
Functions	Continuity check, Diode test, Hold function, Automatic measuring range selection, Automatic switch-off, Backlit display, Type K contact temperature measurement, Visual alarm, Battery status indication, Duty cycle, Non-contact detection of AC voltage	
Power supply	1 x 9 V block battery	
Dimensions	182 mm x 55 mm x 82 mm	
Weight	320 g	
Scope of delivery	Measuring device, Battery(-ies), Safety measuring lines with test probes, Contact temperature sensor type K, Operating manual	