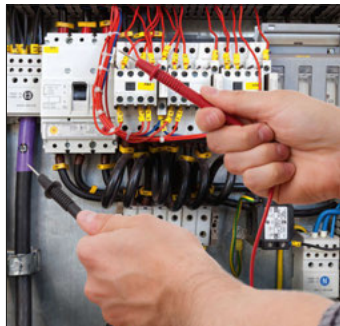


BE47 Digital multimeter

Ergonomically shaped multifunction measuring meter

With its seven measuring functions and its ergonomic design, the multifunction measuring meter BE47 offers manifold possibilities of use and is thus perfectly suited for the most diverse fields of application in the hobby and do-it-yourself sector. Moreover, the BE47 complies with measuring circuit category CAT II 600 V or CAT III 300 V and offers functions for diode, battery and acoustic continuity testing, as well as a battery state indicator.

The protective rubber holster, which can be detached for cleaning, effectively protects the device from damage – even in rough construction site surroundings. The additional fold-out foot integrated in the rubber holster makes the handling of the BE47 noticeably easier and complements the practice-oriented features of this multifunction measuring meter. Due to its attractive value-for-money ratio, the purchase of this multimeter is an interesting supplement particularly for ambitious do-it-yourselfers.



A few practical benefits

- Robust multifunction measuring meter with protective rubber holster
- CAT II 600 V, CAT III 300 V
- Diode test
- Battery test (9 V, 1.5 V)
- Acoustic continuity test
- Battery status indicator



Technical data

Article number	3.510.205.248	
Display	LCD 3 1/2-digit	
Measuring range (Accuracy)	Voltage	U_{DC} 0.001 V up to 600 V, U_{AC} 0.1 V up to 600 V ($U_{DC} \pm 1\%$, $U_{AC} \pm 1.2\%$)
	Current	I_{DC} 0.01 A up to 10 A ($I_{DC} \pm 2.0\%$)
	Resistance	0 Ω up to 2,000 k Ω ($\pm 0.8\%$)
Measuring circuit category	CAT II (600 V), CAT III (300 V)	
Conformity	EN 61326-1, EN 61326-2-2, Degree of pollution 2	
Type of protection	IP50	
Functions	Continuity check, Diode test, Acoustic continuity check, Battery status indication, Battery test (9 V, 1.5 V)	
Power supply	1 x 9 V block battery	
Dimensions	122 mm x 40 mm x 61 mm	
Weight	260 g	
Scope of delivery	Measuring device, Battery(-ies), Safety measuring lines with test probes, Operating manual	