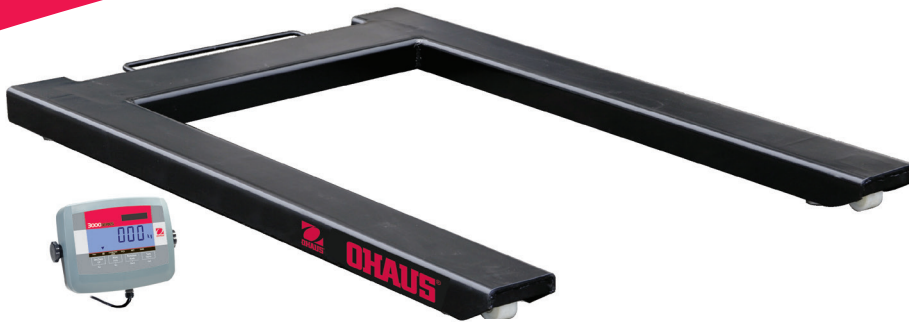


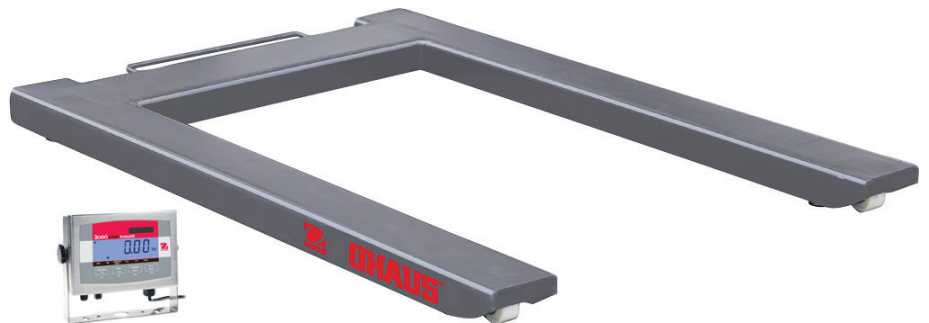


# VE Series

U-Frame Pallet Scales



Painted steel model  
shown with T31P indicator



Stainless steel model  
shown with T32XW indicator

## *Affordability, Durability, OHAUS Quality & Value*

The OHAUS VE Series U-Frame Pallet Scales are the value solution for your dry or washdown weighing needs in industrial and commercial applications. Their high-quality material and construction are designed for years of trouble-free service. Together with mobility features such as lifting handle and front-mounted rollers, the OHAUS VE Series U-Frame Pallet Scales offers a unique combination of convenience, value and quality that your company can depend on.

### *Standard Features Include:*

- Popular 1500kg capacity model
- Painted carbon steel and stainless steel models with handle and rollers for convenient lifting and relocation
- Two rugged OHAUS indicator models:
  - T31P indicator features a high-impact ABS housing with key-holes on the rear cover for wall mounting
  - T32XW indicator features a 304 stainless steel IP65 housing
- Four OIML R60 approved IP67 alloy steel load cells
- Four load cell mounted feet, self-swiveling ball-in-cup design
- IP65 dust and water immersion protected stainless steel junction box
- Available second stage verified scale models 1:3000e with OHAUS indicators
- OHAUS indicators featuring backlit LCD displays with high-visibility 25mm high digits,

Supply & Distributed By:



[WWW.WAGAGROUP.LK](http://WWW.WAGAGROUP.LK)

**WAGA Instrument (PVT) Ltd**

📍 275/B, Railway Road, Maharagama. Sri Lanka

☎ +94 112 088 230 / +94 112 088 231

✉ sales@wagagroup.lk

# VE Series U-Frame Pallet Scales

| Platform Models                                       | VE1500P  | VE1500PW                                    |
|---|--|---|
| Net Weight  | 51kg   | 47kg  |
| External Dimensions                                   | 1260L x 840W x 90minH mm   |   |
| Scale Models  | VE1500P31P   | VE1500P32XW                                 |
| Scale Models , Class III, EC Type approved, 2nd Stage | VE1500P31PM  | VE1500P32XWM                                |
| Platform Material                                     | Carbon steel, painted  | Stainless steel, sand-blasted               |
| Capacity × Readability                                | 1500 kg × 0.5 kg   |   |
| Approval Resolution                                   | 1:3000e  |   |
| Maximum Central Load                                  | 2250 kg  |   |
| Operating Temperature / Humidity                      | -10°C to 40°C / 0% to 95% relative humidity, non-condensing  |   |
| Load Cell   | 4 × IP67 alloy steel, shear beam, OIML C3  |   |
| Load Cell Capacity Emax                               | 1000kg   |   |
| Output Impedance / Excitation Voltage                 | 350 ohm ± 3.5 ohm / 5V~15V, DC/AC  |   |
| Feet  | 2 × front edge rollers with 4 × self-swiveling ball-in-cup design with rubber bottom                                 |   |
| Junction Box  | Rear-access, IP65, 304 stainless steel, 194L × 130W × 45H mm, with 5m long cable                                     |   |
| Other Features  | Integrated lifting handle, external level indicator  |   |
| Indicators  | T31P, ABS plastic  | T32XW, 304 stainless steel IP65 PCB housing |
| Weighing Units  | kg, g, lb, oz, lb:oz   |   |
| Display   | Backlit LCD, 25 mm high, 6-digit, 7-segment  |   |
| Interface   | Built-in RS232C, bi-directional  |   |
| Power   | AC adapter   | Universal switching power supply            |
| Battery   | Internal rechargeable sealed lead acid battery<br>(T31P: 100 hour / T32XW: 58-hour typical operation on full charge) |   |
| Other Indicator Features                              | Piece Counting 1d min APW, Geographical gravity adjustment, Environmental filtering                                  |   |

## Options and Accessories

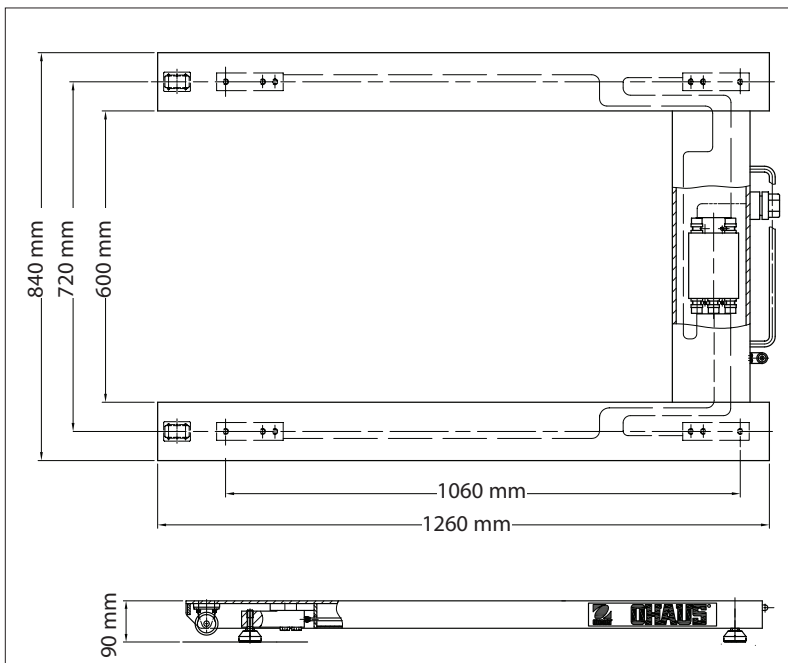
|  |          |
|--|----------|
| Wall mount bracket kit, T31P .....         | 80251747 |
| Wall mount bracket kit, T32XW .....        | 80251748 |
| Foot plate kit, VE painted steel .....     | 72198344 |
| Foot plate kit, VE-W stainless steel ..... | 72198345 |

## Construction and Other Features



Handle and front-mounted rollers for convenient lifting and relocation of the scale

## Outline Dimensions



## Approvals:

- **Safety and EMC:** EN60950, EN61326, FCC, CE, CULUS
- **EC Type Approval:**
  - T31xx Series Indicator: TC7085 / T5980
  - T32XWxx Series Indicator: TC7630 / T5980
  - Load Cell: OIML R60 PTB D09-03.19
- **Quality:** Ohaus quality management system registered to ISO 9001:2008

OHAUS Europe GmbH  
Im Langacher 44  
8606 Greifensee  
Switzerland

e-mail: ssc@ohaus.com  
Tel: 0041 22 567 53 19  
e-mail: tsc@ohaus.com  
Tel: 0041 22 567 53 20

[www.ohaus.com](http://www.ohaus.com)

OHAUS Corporation is an ISO  
9001:2008 manufacturer

ISO 9001:2008  
Registered Quality  
Management System

