

# Heating mantle | beaker

for beaker, integrated controller, 100°C - 450°C



## WHM for beaker, 100°C - 450°C integrated controller

### Ideal for:

- for beaker 100 - 5,000 ml

### Features:

- 100°C - 450°C
- full choice of vessel, capacity, housing and control are offered
- nickel chrome heating element
- coil type: acid-resistant, long life time
- all kinds of beaker can be used (Duran®/Kimax/Pyrex/Iwaki)
- CE certified and unique serial number for tracing

### Controller:

- built-in *temperature controller*



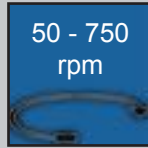
1.000 ml beaker heating mantle

Application (beaker brand)	Beaker capacity (ml)	Beaker Ø (mm)	Watts (W)	Inside depth (mm)	Mantle outside Ø x H mm	Support rod Ø x H mm	Order number
							with 230V
common-use	100	50 - 52	80	40	Ø 150 x 150	Ø 13 x 440	DH.WHM12141
common-use	250	68 - 70	140	65	Ø 150 x 150	Ø 13 x 440	DH.WHM12142
for DU.	400	79 - 81	240	70	Ø 150 x 150	Ø 13 x 440	DH.WHM12143
for Iw./Ki./Py.	400	76 - 78	240	75	Ø 150 x 150	Ø 13 x 440	DH.WHM121431
common-use	600	88 - 90	240	75	Ø 150 x 150	Ø 13 x 440	DH.WHM12144
common-use	800	98 - 100	300	90	Ø 200 x 175	Ø 13 x 440	DH.WHM12145
common-use	1,000	105 - 108	350	90	Ø 200 x 175	Ø 13 x 440	DH.WHM12146
common-use	2,000	130 - 132	450	125	Ø 200 x 195	Ø 13 x 660	DH.WHM12147
for DU./Iw.	3,000	151 - 153	550	160	Ø 270 x 235	Ø 13 x 660	DH.WHM12148
for Ki./Py.	4,000	160 - 162	700	160	Ø 270 x 235	Ø 13 x 660	DH.WHM121481
for DU.	5,000	169 - 171	800	160	Ø 270 x 235	Ø 13 x 660	DH.WHM12149

Remarks: DU. = Duran®, Ki. = Kimax, Iw. = Iwaki, Py. = Pyrex

# Heating mantle | beaker

for beaker, integrated magnetic stirrer and controller, up to 450°C



450°C

beaker

50 - 750  
rpm

## WHM for beaker, 100°C - 450°C

with built-in magnetic stirrer  
integrated controller

### Ideal for:

- for beaker 100 - 5,000 ml

### Features:

- 100°C - 450°C
- built-in stirring and temperature controller
- 50 ~ 750 rpm
- full choice of vessel, capacity, housing and control are offered
- nickel chrome heating element
- coil type: acid-resistant, long life time
- all kinds of beaker can be used (Duran®/Kimax/Pyrex/Iwaki)
- CE certified and unique serial number for tracing

### Controller:

- built-in *stirring & temperature controller*



1,000 ml beaker heating mantle



2x stirrer bars included

Application (beaker brand)	Beaker capacity (ml)	Beaker Ø (mm)	Watts (W)	Inside depth (mm)	Mantle outside Ø x H mm	Support rod Ø x H mm	Order number
							with 230V
common-use	100	50 - 52	80	45	Ø 145 x 140	Ø 13 x 440	<b>DH.WHM121601</b>
common-use	250	68 - 70	140	70	Ø 190 x 165	Ø 13 x 440	<b>DH.WHM121602</b>
for DU.	400	79 - 81	240	70	Ø 190 x 165	Ø 13 x 440	<b>DH.WHM121603</b>
for Iw./Ki./Py.	400	76 - 78	240	70	Ø 190 x 165	Ø 13 x 440	<b>DH.WHM121604</b>
common-use	600	88 - 90	240	72	Ø 190 x 165	Ø 13 x 440	<b>DH.WHM121605</b>
common-use	1,000	105 - 108	350	102	Ø 190 x 200	Ø 13 x 440	<b>DH.WHM121606</b>
common-use	2,000	130 - 132	450	140	Ø 270 x 235	Ø 13 x 660	<b>DH.WHM121607</b>
for DU./Iw.	3,000	151 - 153	550	140	Ø 270 x 235	Ø 13 x 660	<b>DH.WHM121608</b>
for Ki./Py.	4,000	160 - 162	700	170	Ø 325 x 270	Ø 13 x 660	<b>DH.WHM121609</b>
for DU.	5,000	169 - 171	800	170	Ø 325 x 270	Ø 13 x 660	<b>DH.WHM121610</b>

Remarks: DU. = Duran®, Ki. = Kimax, Iw. = Iwaki, Py. = Pyrex

Accessories: Magnetic stirrer bars can be found on page 28

# Heating mantle | beaker

for beaker, external controller available, up to 450°C



## WHM for beaker, 450°C for use with external controller

### Ideal for:

- for beaker 100 - 5,000 ml and use with magnetic stirrer

### Features:

- highly processed aluminium case offers robust standing, easy handling and usability on the magnetic stirrer
- k-type thermo sensor is basically embedded
- nickel chrome heating element
- coil type: acid-resistant, long life time
- CE certified and unique serial number for tracing

### Controller:

- optional remote thermo controllers are available (analog: WHM-C10A, digital: WHM-C10D)



600 ml beaker heating mantle



WHM-C10D  
digital controller



WHM-C10A  
analog controller

Application (beaker brand)	Beaker capacity (ml)	Beaker Ø (mm)	Watts (W)	Inside depth (mm)	Mantle outside Ø x H mm	Support rod Ø x H mm	Order number
							with 230V
common-use	100	50 - 52	80	50	Ø 150 x 80	Ø 13 x 440	DH.WHM12170
common-use	250	68 - 70	140	50	Ø 150 x 115	Ø 13 x 440	DH.WHM12171
for DU.	400	79 - 81	240	85	Ø 150 x 115	Ø 13 x 440	DH.WHM12172
for lw./Ki./Py.	400	76 - 78	240	85	Ø 150 x 115	Ø 13 x 440	DH.WHM121721
common-use	600	88 - 90	240	85	Ø 150 x 115	Ø 13 x 440	DH.WHM12173
common-use	800	98 - 100	300	90	Ø 200 x 140	Ø 13 x 440	DH.WHM12174
common-use	1,000	105 - 108	350	115	Ø 200 x 140	Ø 13 x 440	DH.WHM12175
common-use	2,000	130 - 132	450	140	Ø 200 x 155	Ø 13 x 660	DH.WHM12176
for DU./lw.	3,000	151 - 153	550	175	Ø 270 x 200	Ø 13 x 660	DH.WHM12177
for Ki./Py.	4,000	160 - 162	700	175	Ø 270 x 200	Ø 13 x 660	DH.WHM12178
for DU.	5,000	169 - 171	800	175	Ø 270 x 200	Ø 13 x 660	DH.WHM12179
for DU.	10,000 *	216 - 219	1400	245	Ø 325 x 270	Ø 13 x 660	DH.WHM121791

\* 10,000 ml mantle steel case - magnetic stirring is not available

Remarks: DU. = Duran®, Ki. = Kimax, lw. = lwaki, Py. = Pyrex

Accessories: Remote controller and temperature probes on page 46

# Heating mantle | round flasks

for spherical flasks, integrated controller, up to 450°C



## WHM for round flasks, 100°C-450°C integrated controller

### Ideal for:

- spherical flasks 50 - 20,000 ml

### Features:

- full choice of vessel, capacity, housing and control are offered
- nickel chrome heating element
- coil type: acid-resistant, long life time
- all kinds of round flasks can be used (Duran®/Kimax/Pyrex/Iwaki)
- CE certified and unique serial number for tracing

### Controller:

- built-in *temperature controller*



1.000 ml round flask heating mantle

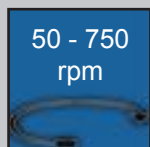
Application (flask brand)	Flask capacity (ml)	Flask Ø (mm)	Watts (W)	Inside depth (mm)	Mantle outside Ø x H mm	Support rod Ø x H mm	Order number	
							with 230V	with 120V
common-use	50	49 - 52	80	40	Ø 150 x 150	Ø 13 x 440	DH.WHM12010	DH.WHM12020
common-use	100	63 - 66	80	40	Ø 150 x 150	Ø 13 x 440	DH.WHM12011	DH.WHM12021
common-use	250	83 - 86	140	50	Ø 150 x 150	Ø 13 x 440	DH.WHM12012	DH.WHM12022
common-use	500	102 - 105	240	65	Ø 200 x 175	Ø 13 x 440	DH.WHM12013	DH.WHM12023
common-use	1,000	130 - 133	350	75	Ø 200 x 175	Ø 13 x 440	DH.WHM12014	DH.WHM12024
for DU./Iw.	2,000	165 - 169	450	100	Ø 270 x 200	Ø 13 x 660	DH.WHM12015	DH.WHM12025
for Ki./Py.	2,000	161 - 164	450	100	Ø 270 x 200	Ø 13 x 660	DH.WHM120151	DH.WHM120251
for DU./Ki.	3,000	184 - 187	550	105	Ø 270 x 200	Ø 13 x 660	DH.WHM12016	DH.WHM12026
common-use	5,000	221 - 224	800	131	Ø 325 x 226	Ø 13 x 800	DH.WHM12017	DH.WHM12027
for DU./Ki.	6,000	234 - 237	800	131	Ø 325 x 226	Ø 13 x 800	DH.WHM12018	DH.WHM12028
for DU.	10,000*	278 - 282	1400	150	Ø 390 x 240	Ø 13 x 800	DH.WHM12019	DH.WHM12029
for DU.	20,000*	344 - 348	2000	200	Ø 470 x 260	Ø 13 x 800	DH.WHM12070	DH.WHM12071

\*-marks: 10,000 ml & 20,000 ml mantle steel case - magnetic stirring is not available

Remarks: DU. = Duran®, Ki. = Kimax, Iw. = Iwaki, Py. = Pyrex

# Heating mantle | round flasks

for spherical flasks, integrated magnetic stirrer and controller, up to 450°C



1.000 ml round flask heating mantle

## WHM for round flasks, 100°C-450°C with built-in magnetic stirrer integrated controller

### Ideal for:

- spherical flasks 50 - 6,000 ml

### Features:

- full choice of vessel, capacity, housing and control are offered
- nickel chrome heating element
- coil type: acid-resistant, long life time
- built-in temperature controller
- all kinds of round flasks can be used (Duran®/Kimax/Pyrex/Iwaki)
- CE certified and unique serial number for tracing

### Controller:

- built-in *stirring and temperature controller*



2x stirrer bars included

Application (flask brand)	Flask capacity (ml)	Flask Ø (mm)	Watts (W)	Inside depth (mm)	Mantle outside Ø x H mm	Support rod Ø x H mm	Order number	
							with 230V	with 120V
common-use	50	49 - 52	80	40	Ø 150 x 150	Ø 13 x 440	DH.WHM12030	DH.WHM12040
common-use	100	63 - 66	80	40	Ø 150 x 150	Ø 13 x 440	DH.WHM12031	DH.WHM12041
common-use	250	83 - 86	140	50	Ø 150 x 150	Ø 13 x 440	DH.WHM12032	DH.WHM12042
common-use	500	102 - 105	240	65	Ø 200 x 175	Ø 13 x 440	DH.WHM12033	DH.WHM12043
common-use	1,000	130 - 133	350	75	Ø 200 x 175	Ø 13 x 440	DH.WHM12034	DH.WHM12044
for DU./Iw.	2,000	165 - 169	450	100	Ø 270 x 200	Ø 13 x 660	DH.WHM12035	DH.WHM12045
for Ki./Py.	2,000	161 - 164	450	100	Ø 270 x 200	Ø 13 x 660	DH.WHM120351	DH.WHM120451
for DU./Ki.	3,000	184 - 187	550	105	Ø 270 x 200	Ø 13 x 660	DH.WHM12036	DH.WHM12046
common-use	5,000	221 - 224	800	131	Ø 325 x 226	Ø 13 x 800	DH.WHM12037	DH.WHM12047
for DU./Ki.	6,000	234 - 237	800	131	Ø 325 x 226	Ø 13 x 800	DH.WHM12038	DH.WHM12048

Remarks: DU. = Duran®, Ki. = Kimax, Iw. = Iwaki, Py. = Pyrex

Accessories: Magnetic stirrer bars can be found on page 28



# Heating mantle | round flasks

for spherical flasks, external controller available, up to 450°C



## WHM for round flasks, 450°C for use with external controller

### Ideal for:

- spherical flasks 50 - 6,000 ml
- use with magnetic stirrer

### Features:

- full choice of vessel, capacity, housing and control are offered
- highly processed aluminium case offers robust standing, easy handling
- nickel chrome heating element
- coil type: acid-resistant, long life time
- K-type thermo sensor is basically embedded
- CE certified and unique serial number for tracing

### Controller:

- optional remote thermo controllers are available (analog: WHM-C10A, digital: WHM-C10D)



1.000 ml round flask heating mantle



WHM-C10D  
digital controller



WHM-C10A  
analog controller

Application (flask brand)	Flask capacity (ml)	Flask Ø (mm)	Watts (W)	Inside depth (mm)	Mantle outside Ø x H mm	Support rod Ø x H mm	Order number	
							with 230V	with 120V
common-use	50	49 - 52	80	48	Ø 150 x 80	Ø 13 x 440	DH.WHM12050	DH.WHM12060
common-use	100	63 - 66	80	50	Ø 150 x 80	Ø 13 x 440	DH.WHM12051	DH.WHM12061
common-use	250	83 - 86	140	50	Ø 150 x 80	Ø 13 x 440	DH.WHM12052	DH.WHM12062
common-use	500	102 - 105	240	85	Ø 200 x 95	Ø 13 x 440	DH.WHM12053	DH.WHM12063
common-use	1,000	130 - 133	350	85	Ø 200 x 140	Ø 13 x 440	DH.WHM12054	DH.WHM12064
for DU./Iw.	2,000	165 - 169	450	110	Ø 270 x 135	Ø 13 x 660	DH.WHM12055	DH.WHM12065
for Ki./Py.	2,000	161 - 164	450	110	Ø 270 x 135	Ø 13 x 660	DH.WHM120551	DH.WHM120651
for DU./Ki.	3,000	184 - 187	550	110	Ø 270 x 135	Ø 13 x 660	DH.WHM12056	DH.WHM12066
common-use	5,000	221 - 224	800	140	Ø 325 x 165	Ø 13 x 800	DH.WHM12057	DH.WHM12067
for DU./Ki.	6,000	234 - 237	800	140	Ø 325 x 165	Ø 13 x 800	DH.WHM12058	DH.WHM12068

Remarks: DU. = Duran®, Ki. = Kimax, Iw. = Iwaki, Py. = Pyrex

Accessories: Remote controller and temperature probes on page 46

# Heating mantle | round flasks

for spherical flasks, external controller available, up to 650°C



1,000 ml round flask heating mantle

## WHM for round flasks, 650°C

for use with external controller  
high maximal temperature

### Ideal for:

- spherical flasks 100 - 10,000 ml
- use with magnetic stirrer

### Features:

- full choice of vessel, capacity, housing and control are offered
- highly processed aluminium case offers robust standing, easy handling
- nickel chrome heating element
- coil type: acid-resistant, long life time
- K-type thermo sensor is basically embedded
- CE certified and unique serial number for tracing

### Controller:

- optional remote thermo controllers are available (analog: WHM-C10A, digital: WHM-C10D)



WHM-C10D  
digital controller



WHM-C10A  
analog controller

Application (flask brand)	Flask capacity (ml)	Flask Ø (mm)	Watts (W)	Inside depth (mm)	Mantle outside Ø x H mm	Support rod Ø x H mm	Order number	
							with 230V	with 120V
common-use	100	63 - 66	120	50	Ø 150 x 80	Ø 13 x 440	DH.WHM12091	DH.WHM12101
common-use	250	83 - 86	200	50	Ø 150 x 80	Ø 13 x 440	DH.WHM12092	DH.WHM12102
common-use	500	102 - 105	350	85	Ø 200 x 95	Ø 13 x 440	DH.WHM12093	DH.WHM12103
common-use	1,000	130 - 133	450	85	Ø 200 x 140	Ø 13 x 440	DH.WHM12094	DH.WHM12104
for DU./lw.	2,000	165 - 169	600	110	Ø 270 x 135	Ø 13 x 660	DH.WHM12095	DH.WHM12105
for Ki./Py.	2,000	161 - 164	600	110	Ø 270 x 135	Ø 13 x 660	DH.WHM120951	DH.WHM121051
for DU./Ki.	3,000	184 - 187	700	110	Ø 270 x 135	Ø 13 x 660	DH.WHM12096	DH.WHM12106
common-use	5,000	221 - 224	1200	140	Ø 325 x 165	Ø 13 x 800	DH.WHM12097	DH.WHM12107
for DU./Ki.	6,000	234 - 237	1200	140	Ø 325 x 165	Ø 13 x 800	DH.WHM12098	DH.WHM12108
for DU.	10,000*	278 - 282	1800*	160	Ø 390 x 240	Ø 13 x 800	DH.WHM12099	DH.WHM12109*

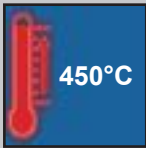
\* DH.WHM12109 is offered with 1 Phase 120V power cable  
♦ 10,000 ml mantle steel case - magnetic stirring is not available

Remarks: DU. = Duran®, Ki. = Kimax, lw. = Iwaki, Py. = Pyrex

Accessories: Remote controller and temperature probes on page 46

# Heating mantle | round flasks

for big spherical flasks up to 20 L, external controller available, up to 450°C



## WHM for big round flasks, 450°C for use with external controller for 10 & 20 l flasks

### Ideal for:

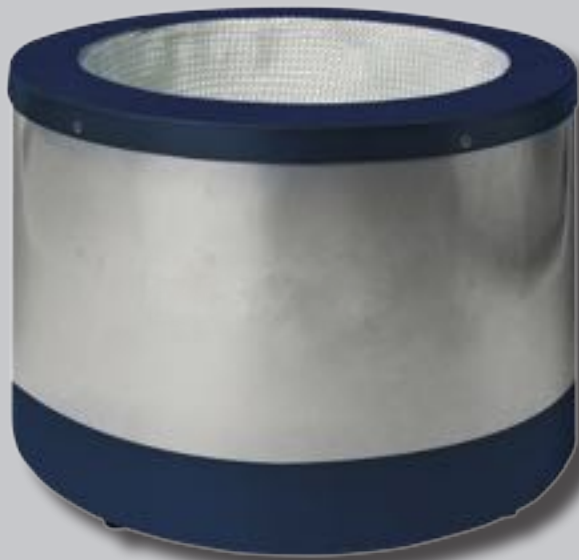
- big spherical flasks

### Features:

- steel case, magnetic stirring is not available
- full choice of vessel, capacity, housing and control are offered
- nickel chrome heating element
- coil type: acid-resistant, long life time
- K-type thermo sensor is basically embedded
- CE certified and unique serial number for tracing

### Controller:

- optional remote thermo controllers are available (analog: WHM-C10A, digital: WHM-C10D)



10l round flask heating mantle



WHM-C10D  
digital controller



WHM-C10A  
analog controller

Application (flask brand)	Flask capacity (l)	Flask Ø (mm)	Watts (W)	Inside depth (mm)	Mantle outside Ø x H mm	Support rod Ø x H mm	Order number	
							with 230V	with 120V
for DU.	10	278 - 282	1400	160	Ø 390 x 240	Ø 13 x 800	<b>DH.WHM12073</b>	<b>DH.WHM12083</b>
for DU.	20	344 - 348	2000	200	Ø 470 x 260	Ø 13 x 800	<b>DH.WHM12074</b>	<b>DH.WHM12084*</b>

\* DH.WHM12084 is offered with 1 Phase 120V power cable

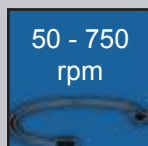
Remarks: DU. = Duran®, Ki. = Kimax, Iw. = Iwaki, Py. = Pyrex

Accessories: Remote controller and temperature probes on page 46



# Heating mantle | reaction vessels

for reaction vessels, integrated magnetic stirrer and controller, 100°C - 450°C



## WHM for reaction vessels 100°C - 450°C

with built-in magnetic stirrer  
integrated controller

### Ideal for:

- reaction vessels 500 - 7,000 ml

### Features:

- nickel chrome heating element
- coil type: acid-resistant, long life time
- K-type thermo sensor is basically embedded, which enables precise control of the temperature of liquid sample in the vessel when used together with remote digital controller
- full choice of vessel, capacity, housing and control are offered
- CE certified and unique serial number for tracing

### Controller:

- built-in *stirring and temperature controller*



1,000 ml reaction vessel heating mantle



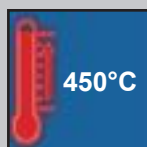
2x stirrer bars included

Vessel capacity ( ml )	Vessel Ø (cm)	Watts (W)	Inside depth (mm)	Mantle outside Ø x H mm	Support rod Ø x H mm	Order number
						with 230V
500	Ø 11 x 10	240	72	Ø 200 x 175	Ø 13 x 660	DH.WHM722100
1,000	Ø 11 x 15	350	107	Ø 200 x 195	Ø 13 x 660	DH.WHM722101
2,000	Ø 13 x 19	450	142	Ø 200 x 195	Ø 13 x 660	DH.WHM722102
3,000	Ø 13 x 28	550	177	Ø 200 x 250	Ø 13 x 800	DH.WHM722103
5,000	Ø 16 x 29	800	177	Ø 270 x 235	Ø 13 x 800	DH.WHM722104
6,000	Ø 21.5 x 24	800	177	Ø 325 x 270	Ø 13 x 800	DH.WHM722105
7,000	Ø 21.5 x 25	850	177	Ø 325 x 270	Ø 13 x 800	DH.WHM722106

Accessories: Magnetic stirrer bars can be found on page 28

# Heating mantle | reaction vessels

for reaction vessels, external controller available, 100°C - 450°C



## WHM for reaction vessels 100°C - 450°C

### Ideal for:

- reaction vessels 500 ml - 10 l

### Features:

- nickel chrome heating element
- coil type: acid-resistant, long life time
- K-type thermo sensor is basically embedded, which enables precise control of the temperature of liquid sample in the vessel when used together with remote digital controller
- cylindrical-type
- highly processed aluminium case offers robust standing, easy handling and usability on the magnetic stirrer
- full choice of vessel, capacity, housing and control are offered
- CE certified and unique serial number for tracing

### Controller:

- optional remote thermo controller is available (analog: WHM-C10A, digital: WHM-C10D)



10,000 ml reaction vessel heating mantle



WHM-C10D digital controller



WHM-C10A analog controller

with aluminium case, 0,5 - 10l, can be used with magnetic stirrers

Flasks capacity (ml)	Flask Ø (cm)	Watts (W)	Inside depth (mm)	Mantle outside Ø x H mm	Support rod Ø x H mm	Order number
						with 230V
500	Ø 11 x 10	240	80	Ø 200 x 140	Ø 13 x 660	DH.WHM12211
1,000	Ø 11 x 15	350	115	Ø 200 x 140	Ø 13 x 660	DH.WHM12212
2,000	Ø 13 x 19	450	140	Ø 200 x 155	Ø 13 x 660	DH.WHM12213
3,000	Ø 13 x 28	550	175	Ø 200 x 195	Ø 13 x 800	DH.WHM12214
5,000	Ø 16 x 29	800	210	Ø 270 x 235	Ø 13 x 800	DH.WHM12215
6,000	Ø 21.5 x 24	800	210	Ø 325 x 225	Ø 13 x 800	DH.WHM12216
7,000	Ø 21.5 x 25	850	210	Ø 325 x 225	Ø 13 x 800	DH.WHM122161
10,000	Ø 21.5 x 33	1400	245	Ø 325 x 270	Ø 13 x 800	DH.WHM12217
10,000	Ø 24 x 31	1400	245	Ø 350 x 350	Ø 13 x 800	DH.WHM122171

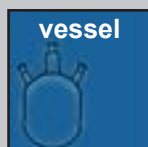
with steel case, 20 l, no use with magnetic stirrers

Flasks capacity (l)	Flask Ø (cm)	Watts (kW)	Inside depth (mm)	Mantle outside Ø x H mm	Support rod Ø x H mm	Order number
						with 230V
20	Ø 27 x 45	2	330	Ø 400 x 350	Ø 13 x 800	DH.WHM12218
20	Ø 29 x 42	2	330	Ø 400 x 350	Ø 13 x 800	DH.WHM122181

Accessories: Remote controller and temperature probes on page 46

# Heating mantle | reaction vessels

for reaction vessels with bottom outlet, external controller available, 100°C - 450°C



## WHM for reaction vessels 100°C - 450°C

### Ideal for:

- reaction vessels 500 ml - 20 l with bottom outlet

### Features:

- nickel chrome heating element
- coil type: acid-resistant, long life time
- K-type thermo sensor is basically embedded, which enables precise control of the temperature of liquid sample in the vessel when used together with remote digital controller
- cylindrical-type with bottom outlet
- full choice of vessel, capacity, housing and control are offered
- CE certified and unique serial number for tracing

### Controller:

- optional remote thermo controller is available (analog: WHM-C10A, digital: WHM-C10D)



2.000 ml reaction vessel heating mantle with bottom outlet



WHM-C10D digital controller



WHM-C10A analog controller

### with aluminium case, 0.5 - 10l

Flasks capacity (ml)	Flask Ø (cm)	Watts (W)	Inside depth (mm)	Mantle outside Ø x H mm	Bottom outlet (hole) l+w (mm)	Support rod Ø x H mm	Order number
							with 230V
500	Ø 11 x 10	240	80	Ø 200 x 140	72 x 40	Ø 13 x 660	DH.WHM12231
1,000	Ø 11 x 15	350	115	Ø 200 x 140	72 x 40	Ø 13 x 660	DH.WHM12232
2,000	Ø 13 x 19	450	140	Ø 200 x 155	72 x 40	Ø 13 x 800	DH.WHM12233
3,000	Ø 13 x 28	550	210	Ø 200 x 250	120 x 70	Ø 13 x 800	DH.WHM12234
5,000	Ø 16 x 29	800	210	Ø 270 x 235	120 x 70	Ø 13 x 800	DH.WHM12235
6,000	Ø 21.5 x 24	800	210	Ø 325 x 225	120 x 70	Ø 13 x 800	DH.WHM12236
7,000	Ø 21.5 x 25	850	210	Ø 325 x 225	120 x 70	Ø 13 x 800	DH.WHM122361
10,000	Ø 21.5 x 33	1400	250	Ø 325 x 270	120 x 70	Ø 13 x 800	DH.WHM12237
10,000	Ø 24 x 31	1400	250	Ø 350 x 350	120 x 70	Ø 13 x 800	DH.WHM122371

### with steel case, 20 l, no use with magnetic stirrers

Flasks capacity (l)	Flask Ø (cm)	Watts (kW)	Inside depth (mm)	Mantle outside Ø x H mm	Bottom outlet (hole) l+w (mm)	Support rod Ø x H mm	Order number
							with 230V
20	Ø 27 x 45	2	330	Ø 400 x 350	120 x 70	Ø 13 x 800	DH.WHM12238
20	Ø 29 x 42	2	330	Ø 400 x 350	120 x 70	Ø 13 x 800	DH.WHM122381

**Please note:** contact our sales team if you're interested in buying matching glass reaction vessels!

**Mail:** info@witeg.de

**Phone:** +49 (0)9342 / 9301-0

**Fax:** +49 (0)9342 / 9301-77

Accessories: Remote controller and temperature probes on page 46

# Heating mantle | multi-place

multi-places (3 or 6), individual controller for each place, 100°C - 450°C



## WHM multi-place, 100°C - 450°C

### Ideal for:

- repetitive extraction (Kjeldahl, Soxhlet and other extraction procedures), laboratory reflux and distillation applications
- Duran®, Kimax, Pyrex and Iwaki-brand round flask

### Features:

- nickel chrome heating element
- coil type: acid-resistant, long life time
- highly processed aluminium case offers robust standing
- easy handling
- lower profile for space-saving convenience
- three support rods and two hooks included
- CE certified and unique serial number for tracing

### Controller:

- built-in analog controller



6-places heating mantle  
with three rods and two hooks (included)



3-places heating mantle

### 6-places heating mantle

Flask capacity (ml)	Flask		Watts (W)	Inside depth (mm)	Dimensions W x D x H (mm)	Order number	
	max. Ø (cm)	Bottom				with 230V	with 120V
250/300	83 - 86	flat	840	50	800 x 240 x 110	DH.WHM12291	DH.WHM12292
250/300	83 - 86	round	840	50	800 x 240 x 110	DH.WHM12293	DH.WHM12294
500	102 - 105	round	1440	65	950 x 270 x 130	DH.WHM12295	DH.WHM12296

### 3-places heating mantle

Flask capacity (ml)	Flask		Watts (W)	Inside depth (mm)	Dimensions W x D x H (mm)	Order number	
	max. Ø (cm)	Bottom				with 230V	with 120V
500	102 x 105	round	720	65	550 x 270 x 130	DH.WHM12391	DH.WHM12392
1,000	130 x 131	round	1050	75	690 x 340 x 170	DH.WHM12393	DH.WHM12394

Please note: No clamps, bossheads or extraction apparatus included!  
Accessories: Suitable extraction apparatus can be found on page 233